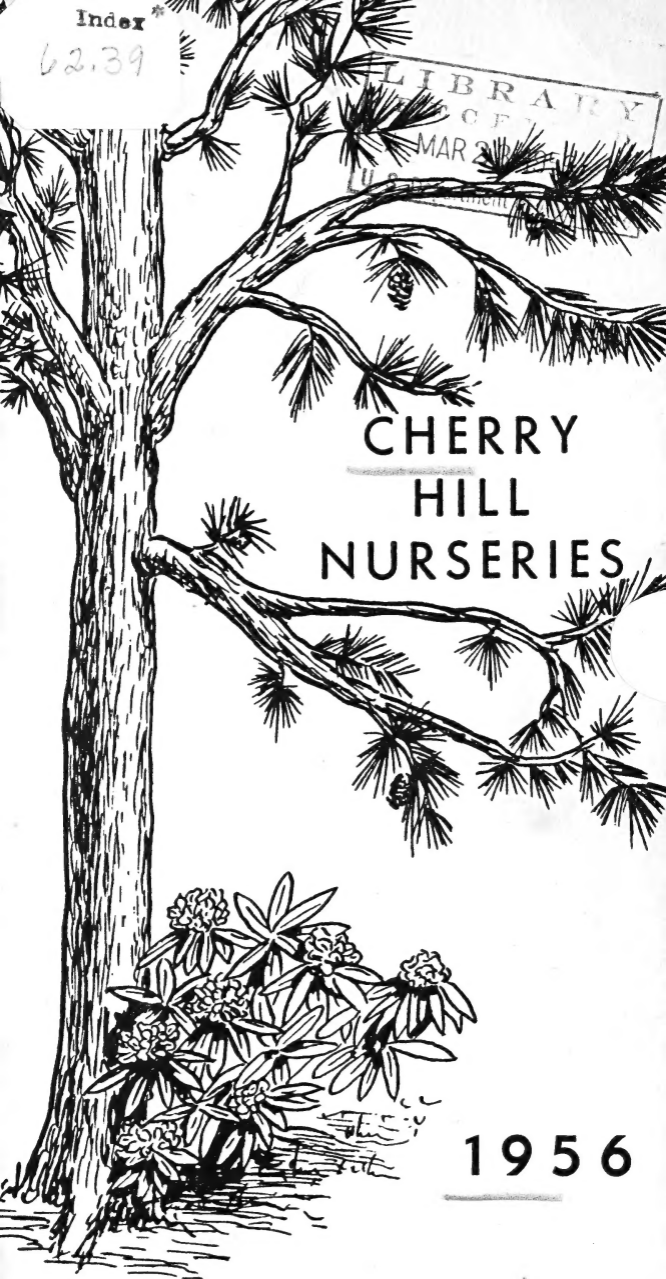


Index*

62.39

LIBRARY
MAR 2
U.S. DEPARTMENT



CHERRY
HILL
NURSERIES

1956

THURLOWS and STRANGER, INC.
West Newbury
Mass.

CONTENTS

	Pages
Evergreen Trees	3-8
Evergreen Shrubs	9-13
Deciduous Trees	14-18
Deciduous Shrubs	19-29
Vines	30-31
Fruit	32-35
Roses	36-40
Peonies	41-52
Phlox	53
Iris	54-55
Herbaceous Perennials	56-57
Fertilizers, etc.	58-59
Conditions of Sale	66
Index	60-63

1956 *Catalog*

CHERRY HILL NURSERIES

THURLOWS & STRANGER, INC.

West Newbury .. Massachusetts
Nurseries at West Newbury and Newburyport
Telephone Newburyport—Homestead 2-6688

Members:

Mass. Nurserymen's Association
New England Nurserymen's Association
American Association of Nurserymen
American Peony Society

We cordially invite you to visit our Nurseries at West Newbury and Newburyport where, for over one hundred years, the Cherry Hill Nurseries have been engaged in the growing of fine plants and trees. This long experience enables us to supply you with strong hardy plants that are sure to thrive in our rugged New England climate. Both Nurseries are located on improved roads easily accessible the year around.

If impossible to visit the nursery, we invite you to order by telephone or mail. We use the greatest possible care in the selection of all stock and we will gladly pay return charges and replace any stock not satisfactory if notified within five days after arrival of goods.

We are always glad to have customers order stock at the nursery where it can be seen, but cannot dig orders while the customer waits to take them. We will gladly tag and reserve special plants if the type and size wanted is other than the usual nursery run, but as orders through the spring are promised several days in advance most of the time, it will be necessary to dig them in rotation as ordered and either hold them to be called for or to be delivered by our trucks. This is necessary as it is hardly fair to delay orders taken at an earlier date.

The above does not apply to Perennials, Roses, Fruit trees or any of the various shrubs or evergreens that we often have dug ahead and ready to ship.

During the spring planting season, our Nurseries are open from 7:00 A.M. until 4:30 P.M. every weekday. No orders can be dug Sundays, but visitors are welcome from 10:00 A.M. until 5:00 P.M. and orders may be left for later delivery. The balance of the year we are open from 8:00 A.M. until 5:00 P.M. Closed Saturdays and Sundays.

For Conditions of Sale see Page 66.



FOR BETTER GARDENS

We offer the trees and plants listed in this booklet to help you make a garden.

Evergreen Trees

All our evergreen trees are dug with a ball of earth adhering to the roots and burlapped (B.&B.). This insures against drying of the roots. Prices include this service.

Chamaecyparis obtusa nana

DWARF HINOKI CYPRESS

Interesting form of very slow growth. For rock work or where a dwarf evergreen is desired.

	Each	Per 10	Per 100
6 to 8 in.	\$4.50	40.00	

Chamaecyparis pisifera filifera

THREAD-BRANCHED CYPRESS

Of rather slow growth and bushy habit. The slender, pendulous branchlets make a fountain of green.

2 ft.	5.00		
2½ ft.	7.00	65.00	
3 ft.	10.00	90.00	

Chamaecyparis p. plumosa

PLUMED CYPRESS

Dense conical habit with light green feathery foliage. If pruned, it may be kept as a dwarf evergreen for a group.

1½ ft.	3.50	32.50	
2 ft.	4.50	40.00	

Chamaecyparis p. aurea

GOLDEN PLUMED CYPRESS

Of the same growth as the green form, but the new growth tipped yellow. Rather slow in growth.

1½ ft.	3.50	32.50	
2 ft.	4.50	40.00	
2½ ft.	6.00		

Juniperus chinensis pfitzeriana

PFITZER'S JUNIPER

Spreading growth attaining a height of four feet. The undulating branches give a pleasing effect.

1½ ft. spread	6.25	60.00	
2 ft. spread	7.75		

Juniperus c. glauca hetzi

HETZ JUNIPER

This resembles Pfitzer's Juniper in habit of spreading growth. Attractive glaucous green foliage.

1½ ft. spread	6.00	55.00	
2 ft. spread	7.50	70.00	

Juniperus c. sargentii

SARGENT JUNIPER

Prostrate, spreading growth making a firm mat of deep green.

15 in.	5.50	50.00	
-------------	------	-------	--

Juniperus excelsa stricta **GREEK JUNIPER**

Broad pyramidal habit. Dwarf growth of bluish green.

	Each	Per 10
18 in.	4.50	
2 ft.	5.50	
2½ ft.	6.50	
3½ ft.	7.50	

Juniperus horizontalis depressa plumosa
PLUMED SPREADING JUNIPER

Especially good for a ground cover as the plants make thick, low carpets. The foliage is bright green, changing to an attractive purple as winter approaches.

1½ ft.	5.50	50.00
2 ft.	6.50	60.00

Juniperus h. douglasi **WAUKEGAN JUNIPER**

Low, trailing growth with steel blue foliage. Attractive for rocky slopes.

15 in.	4.50	42.50
-------------	------	-------

Juniperus sabina **SABIN JUNIPER**

Dwarf spreading habit with grayish green foliage.

15 in. spread	3.75	
2 ft. spread	7.50	

Juniperus squamata meyeri **MEYER'S JUNIPER**

Unusual in coloring is this semi-erect evergreen with its intense steel blue foliage. Of dwarf growth.

15 in.	3.75	35.00
18 in.	5.00	

Picea excelsa **NORWAY SPRUCE**

Fast-growing tree of pyramidal habit growing to 60 ft.

3 ft.	6.00	
4 ft.	8.00	
5 ft.	11.00	

Picea glauca (canadensis) **WHITE SPRUCE**

An attractive tall-growing evergreen of shapely habit. Hardy in exposed situations.

1½ ft.	4.00	37.50
2 ft.	5.00	45.00
2½ ft.	6.50	

Pinus mugo mughus **DWARF MUGHO PINE**

The spreading branches are clothed with crisp, dark green needles. Rather slow in growth.

15 in. spread	5.25	50.00
18 in. spread	6.50	

Pinus nigra austriaca **AUSTRIAN PINE**

A very hardy Pine of fast growth and broad irregular habit. Especially good for seashore planting.

	Each	Per 10	Per 100
2 ft.	6.00		
2½ ft.	7.50		
3 ft.	9.50		

Pinus resinosa **RED PINE**

Of very rapid growth with long dark green needles.

3 ft.	7.50		
------------	------	--	--

Pinus strobus **WHITE PINE**

One of the handsomest of our native evergreens. Soft green foliage.

5 ft.	10.00	95.00	
6 ft.	12.00	110.00	
7 ft.	15.00		
8 ft.	20.00		
9 ft.	24.00		
10 ft.	28.50		

Pinus sylvestris **SCOTCH PINE**

A fast-growing tree of broad habit. Silvery gray-green foliage and attractive brown bark.

3 ft.	7.50		
------------	------	--	--

Pinus thunbergi **JAPANESE BLACK PINE**

Resembling the Austrian Pine, but of much more irregular growth. Picturesque and good for seashore planting.

2 ft.	6.50		
3 ft.	7.50		

Retinospora (See Chamaecyparis)**Taxus baccata repandens****ENGLISH SPREADING YEW**

Low-spreading habit with dark green foliage. Does especially well in the shade.

5 to 8 ft. extra fine specimens \$50.00 to \$75.00 each.

Taxus cuspidata **SPREADING YEW**

Does well in sun or shade. The medium green foliage is pleasing in texture. Red berries in the fall. Fine for group or foundation planting.

15 in.	5.25	50.00	475.00
18 in.	7.00	65.00	600.00
2 ft.	9.00	85.00	
2½ ft.	12.50		

7 to 14 ft. extra heavy specimens \$65.00 to \$150.00 each.

Taxus c. capitata **UPRIGHT YEW**

The upright form makes most satisfactory hedges, which may be kept trimmed from three feet to as tall as desired. Our large, compact specimens are as fine as may be found.

	Each	Per 10	Per 100
1½ ft.	7.50	70.00	
2 ft.	9.50	90.00	
2½ ft.	14.00	135.00	
3 ft.	17.00	165.00	
2½ ft. extra bushy	16.50		
3 ft. extra bushy	20.00		

Heavy Sheared Specimens:

10 ft.	90.00
12 ft.	120.00
10 ft. extra bushy	125.00
12 ft. extra bushy	140.00
14 ft. extra bushy	165.00

Taxus c. densiformis **DENSE SPREADING YEW**

An improved form of the spreading type. Compact, bushy growth and heavy foliage.

1½ ft.	8.00	75.00	700.00
2 ft.	9.50	90.00	

Taxus c. nana (brevifolia) **DWARF YEW**

Dark green foliage throughout the year. Of slow growth and spreading habit.

12 in.	4.75	45.00	425.00
15 in.	6.25	60.00	550.00
18 in.	9.00	85.00	
2 ft.	13.50		

Taxus c. Thayer **THAYER'S YEW**

A new spreading form of compact growth.

15 in.	5.50	50.00
18 in.	7.50	70.00

Taxus media **HYBRID SPREADING YEW**

Compact spreading growth. Foliage dark green.

15 in.	5.25	50.00	475.00
18 in.	7.00	65.00	600.00
2 ft.	9.00		

Taxus m. Hatfield **HATFIELD'S UPRIGHT YEW**

Many erect stems of twiggy growth with dark green foliage. Unequaled for hedges or wherever a specimen plant may be desired.

15 in.	5.25	50.00	475.00
18 in.	6.50	60.00	550.00
2 ft.	8.00	75.00	700.00
2½ ft.	10.50	100.00	
3 ft.	16.00		
5 to 10 ft. extra bushy \$60.00 to \$125.00 each.			

Globe Form:

These have been trimmed to a low, dense form.

	Each	Per 10	Per 100
12 to 15 in.	5.00	45.00	
15 to 18 in.	7.50	72.50	

Pyramidal Form:

We can also furnish plants trimmed in pointed, pyramidal form for individual plantings. Compact and dense.

15 in.	5.50	50.00	
18 in.	8.00	75.00	
2 ft.	11.00	100.00	

Taxus m. Hicks**HICK'S UPRIGHT YEW**

Upright in growth with heavy dark green foliage. Bears bright ~~red~~ berries in October. Our plants have been pruned and are much bushier than the usual grade.

18 in.	5.50	50.00	475.00
2 ft.	7.50	70.00	625.00
2½ ft.	10.00	90.00	
3 ft.	13.50		
3½ ft.	17.50		

Thuja occidentalis douglasi pyramidalis**DOUGLAS PYRAMIDAL ARBOVITAE**

Pyramidal form. The dark green fern-like foliage is borne on peculiarly twisted branchlets.

4 ft.	7.50		
5 ft.	9.50		
6 ft.	12.00		
7 ft.	15.00		
8 ft.	17.50		
9 ft.	22.00		

Thuja o. globosa**GLOBE ARBOVITAE**

Dwarf and globular in growth.

15 in. spread	3.25	30.00	
18 in. spread	4.25		

Thuja o. nigra**DARK AMERICAN ARBOVITAE**

This strain called Wintergreen is of broad, pyramidal growth with bright green foliage. The plants are uniform and make fine hedges.

3 ft.	6.00	57.50	550.00
4 ft.	8.00	75.00	
5 ft.	10.00	90.00	
6 ft.	13.50		
7 ft.	17.00		

Thuya o. pyramidalis**PYRAMIDAL ARBOVITAE**

Narrow, columnar growth. The foliage is dark green throughout the winter.

	Each	Per 10	Per 100
2 ft.	4.00	37.50	350.00
3 ft.	5.00	45.00	400.00
4 ft.	6.50	60.00	550.00
5 ft.	8.00	75.00	700.00
6 ft.	11.00	100.00	

Thuya o. Rosenthal**ROSENTHAL'S ARBOVITAE**

Columnar in form and of slow growth.

3 ft.	5.50	50.00	
4 ft.	7.50	70.00	
6 ft.	12.00		
7 ft.	15.00		

Thuya o. wareana**SIBERIAN ARBOVITAE**

Slow in growth making a dense broad pyramid. Foliage thick and dark green. Hardy and satisfactory.

2½ ft.	5.75	55.00	
3 ft.	6.50	60.00	
3½ ft.	7.50	70.00	
4 ft.	10.00	90.00	
5 ft.	13.50		

Tsuga canadensis**CANADA HEMLOCK**

Graceful tree with short dark green needles of pleasing texture.

2 ft.	6.00	55.00	
2½ ft.	7.00	65.00	600.00
3 ft.	8.50	80.00	750.00
3½ ft.	9.75	90.00	850.00
4 ft.	12.50	115.00	
5 ft.	16.50	150.00	

Tsuga carolinianum**CAROLINA HEMLOCK**

Dense dark green needles. More upright in growth than the Canadian Hemlock.

2 ft.	6.00		
2½ ft. ..	7.00		
3 ft.	8.50		
3½ ft.	9.75		



Evergreen Shrubs

All Evergreen shrubs, except Pachysandra and Vinca are dug with a ball of earth and prices quoted include this service.

Daphne cneorum

ROSE DAPHNE

Dwarf spreading plants bearing clusters of small, very fragrant pink flowers in May and occasionally throughout the summer.

	Each	Per 10
Strong plants in pots		
6 to 9 in.	2.00	\$18.00
9 to 12 in.	2.50	22.50

Euonymus fortunei

UPRIGHT BITTERSWEET

Evergreen shrub with glossy green, pointed leaves. May be used with other evergreens to give variety to the border.

2 ft.	3.75
3 ft.	5.00

Euonymus f. carrierei

GLOSSY BITTERSWEET

Small evergreen shrub with glossy leaves.

15 to 18 in.	1.75	16.00
18 to 24 in.	2.50	
2½ ft.	5.50	
3 ft.	7.50	

RHODODENDRONS IN THEIR GLORY IN JUNE



Euonymus f. coloratus**BLOOD-LEAVED BITTERSWEET**

Rapid growth, green turning to red in winter.

	Each	Per 10	Per 100
2 yr.	1.00	9.00	
3 yr.	1.20	10.00	

Euonymus f. radicans**EVERGREEN BITTERSWEET**

Strong-growing vine with small dark evergreen leaves. Fine for covering rock work.

3 yr.	1.40	13.00	
4 yr.	1.75		
5 yr.	2.25		

Euonymus f. vegetus**BROAD-LEAVED BITTERSWEET**

Broad rounded leaves of deep green with bright orange and red fruits. Fine for ground cover or vine.

12 to 15 in.	1.65	15.00	
15 to 18 in.	2.25	20.00	

Hedera helix baltica **HARDY ENGLISH IVY**

With a little winter protection, this is an evergreen. Good for a shady ground cover. We grow two plants in each pot.

3½ in. pots75	6.50	55.00
-------------------	-----	------	-------

Ilex crenata convexa **BOX-LEAF HOLLY**

A charming dwarf evergreen with small glossy green leaves about the size of dwarf Box. Black berries. Fine for the evergreen border.

12 to 15 in. spread	4.00	37.50	
15 to 18 in. spread	5.25	47.50	
18 to 24 in. spread	7.50	70.00	

Kalmia latifolia **MOUNTAIN LAUREL**

The flat heads of pink and white flowers are most attractive. Grows well in shade. Nursery grown plants.

12 in.	3.75	35.00	
15 in.	5.00	47.50	
18 in.	6.50		
2 ft.	7.50		
2½ ft.	9.50		

Leucothoe catesbaei **DROOPING LEUCOTHOE**

Fronde-like stems with shining green leaves. White flowers.

12 in. clumps	3.50	32.00	
---------------------	------	-------	--

Pachysandra terminalis **JAPANESE SPURGE**

A hardy, evergreen perennial of spreading habit, especially useful as a ground cover in dry, shady spots.

Strong Plants	0.00	2.50	22.00
---------------------	------	------	-------

Pieris floribunda (Andromeda)**LILY-OF-THE-VALLEY BUSH**

A charming low-spreading bush with medium green foliage. The nodding white bell-shaped flowers, borne on erect spikes, bloom early in the spring.

	Each	Per 10
12 to 15 in. spread	4.25	40.00
15 to 18 in. spread	5.75	52.50
18 to 24 in. spread	7.50	

Pieris japonica JAPANESE ANDROMEDA

Of more erect habit than *P. floribunda*, with dark lustrous foliage and long racemes of white bell-shaped flowers.

15 to 18 in.	5.00	
18 to 24 in.	7.00	65.00
2 ft.	8.50	

Rhododendron carolinianum**CAROLINA RHODODENDRON**

Semi-dwarf plant with narrow leaves. Free-flowering in habit, the blossoms range through shades of pink.

12 in.	4.25	40.00
15 in.	5.50	50.00
18 in.	7.00	

Rhododendron catawbiense**CATAWBA RHODODENDRON**

Our native *Rhododendron* from the Carolina mountains is one of the best of the broad-leaved evergreens. Foliage deep green with large clusters of flowers in various shades of pink.

18 in.	7.00	
-------------	------	--

Extra bushy plants 5 to 6 ft. \$35.00 to \$60.00 each.



Rhododendron maximum**ROSEBAY RHODODENDRON**

Long, broad dark green leaves and tall growth. Delicate pink buds and white flowers bloom later than the others. Excellent for background and woods plantings.

	Each
3 ft. clumps	11.00
3½ ft. clumps	14.00
4 ft. clumps	17.50
5 ft. clumps	22.00
6 ft. clumps	30.00
5 to 9 ft. extra bushy	\$35.00 to \$75.00 each.

RHODODENDRON HYBRIDS

With their large heads of flowers, varying in shades of bright crimson, pink or white, these are among our most striking of flowering shrubs. When not in bloom, the dark evergreen leaves give pleasing foliage effects. Many of the hybrids are not suitable as far north as this and we have selected and grown those of *Rhododendron catawbiense* parentage which have proved hardy. In planting, mix the soil with peat or leafmold, which has an acid reaction and is retentive of moisture during the summer. Heavy watering in the

RHODODENDRONS GIVE MASSES OF COLOR AND ARE
ATTRACTIVE AT ALL TIMES



late fall will provide the plants with sufficient sap to carry them through the dormant winter period.

	Each	Per 10	Per 100
15 in.	7.00		
18 in.	9.50		
21 in.	11.00		
2 ft.	13.50		
2½ ft.	16.50		

Album elegans. Tall, upright growth. Buds of shell pink opening into blush white flowers. Rather late. Sizes 2½ ft., 4 ft. (Large sizes 6 ft. to 8 ft., prices on application).

Boule de Neige. A slow-growing variety, forming bushy compact plants. White flowers. Sizes 12 in. @ \$7.00 each; 15 in. @ \$9.00 each.

Caractacus. Dark crimson red. Compact in growth. Sizes 15 in., 18 in., 21 in., 2 ft.

Catawbiense alba. Pink buds opening into white flowers. A fine hardy variety. Sizes 15 in., 18 in., 21 in., 2 ft.

Charles Dickens. Brilliant, deep red flowers. Open growth. Sizes 15 in., 18 in.

Dr. H. C. Dresselhuys. Rich deep red. Sizes 18 in., 21 in., 2 ft.

Edward S. Rand. A fine bright crimson. Sizes 15 in., 18 in., 21 in., 2 ft.

Ignatius Sargent. Very bright pink or light red. Spreading growth. Sizes 15 in., 18 in., 21 in., 2 ft.

Mrs. Charles Sargent. Very fine bright pink. Sizes 15 in., 18 in., 21 in.

Parson's Gloriosum. Rose-pink. Hardy. Sizes 15 in., 18 in.

Roseum elegans. Rose-pink, bushy habit of growth and one of the best for foliage effects. Sizes 15 in., 18 in.

Rhododendron Hybrid Seedlings

Grown from seed from selected named varieties, these produce blooms of red, pink, white or lavender. We cannot guarantee the colors.

15 in.	5.50	50.00
18 in.	7.00	65.00
2 ft.	9.00	

Vinca minor

PERIWINKLE

A trailing evergreen vine useful for cover in shady spots. Soft blue flowers in the spring.

Strong Field-grown plants	.35	3.00	22.00
---------------------------	-----	------	-------

Vinca m. Bowles' Variety

An improved form of the above with deep green foliage and the large blue flowers appear intermittently throughout the summer.

Strong Field-grown plants	.45	3.50	28.50
---------------------------	-----	------	-------

Deciduous Trees

Acer palmatum atropurpurem

BLOOD-LEAF MAPLE

Dwarf Japanese Maple with shrub-like growth and dark red foliage. Plant in a protected situation.

	Each	Per 10
15 in. B.&B.	6.00	

Acer platanoides

NORWAY MAPLE

Broad, round-headed tree with deep green leaves. Very satisfactory for lawn or street planting.

8 to 10 ft	10.00	90.00
10 to 12 ft.	12.50	120.00

Acer p. Schwedleri nigra (Pat. No. 735)

CRIMSON KING MAPLE

Brilliant crimson foliage retaining its color throughout the summer. A striking novelty.

6 to 7 ft.	8.00
7 to 8 ft.	10.00

Acer saccharum

SUGAR MAPLE

One of our finest shade trees for lawn or street planting. Clean, straight growth and well-developed head.

8 to 10 ft.	9.00
10 to 12 ft.	12.00

Betula papyrifera

CANOE BIRCH

White flaking bark on trunk and larger branches. **For Spring planting only.**

5 to 6 ft. B.&B.	6.50
6 to 8 ft. B.&B.	8.00
8 to 10 ft. B.&B.	10.00

Betula pendula gracilis

CUT-LEAF WEEPING BIRCH

Graceful weeping habit and finely cut leaves. With age the bark of the trunk and branches becomes white. **For Spring planting only.**

6 to 8 ft. B.&B.	8.50
8 to 10 ft. B.&B.	11.00
10 to 12 ft. B.&B.	15.00
12 to 14 ft. B.&B.	20.00

Cercis canadensis

REDBUD

A small tree bearing clusters of rosy pink, small flowers in the spring before the leaves appear. Attractive light green foliage.

3 to 4 ft. B.&B.	4.00
4 to 5 ft. B.&B.	5.00
5 to 6 ft. B.&B.	6.50

Cladrastis lutea

Ornamental tree of spreading growth. White fragrant flowers borne in long racemes.

	Each	Per 10
3 to 4 ft. B.&B.	7.50	

Cornus florida**WHITE FLOWERING DOGWOOD**

Small tree of pleasing habit of growth. The masses of white fourbract flowers in the early spring are followed by bright red berries. One of the best fall foliage plants, as the orange-scarlet leaves remain for a considerable time.

3 ft. B.&B.	5.00	45.00
4 ft. B.&B.	6.50	60.00
5 ft. B.&B.	9.00	85.00

Cornus f. rubra**RED FLOWERING DOGWOOD**

The flower bracts are deep pink or red and the masses of bloom are especially attractive.

3 ft. B.&B.	8.00
3½ ft. B.&B.	9.50

Cornus kousa**JAPANESE DOGWOOD**

Creamy white flowers in June are followed by large, red fruit resembling cherries.

4 ft. B.&B.	8.00
5 ft. B.&B.	10.00

Crataegus cordata**WASHINGTON HAWTHORN**

Bushy, upright growth with dark green leaves. The white flowers are followed by shining red berries.

4 to 5 ft. B.&B.	6.50
5 to 6 ft. B.&B.	8.50
6 to 7 ft. B.&B.	10.00

PLANTING ALONG WOOD PATH IN OUR NURSERIES



Crataegus oxycantha**DOUBLE FLOWERED HAWTHORN**

The flowers are borne in clusters of small rosettes during the latter part of May.

	Each	Per 10
5 to 6 ft. B.&B.		
Paul's Scarlet	6.00	
4 to 5 ft. B.&B.		
Double Pink	5.00	

Gleditsia triacanthos inermis**THORNLESS HONEY LOCUST**

Attractive, large tree with small leaves. Does well in poor soil.

6 to 8 ft.	6.50
8 to 10 ft.	9.50
10 to 12 ft.	12.50

Gleditsia triacanthos inermis Moraine (Pat. No. 836)**MORAINE LOCUST**

Dark green foliage of lacy compound leaves. Fast-growing tree, tall and vase-shaped as it matures.

5 to 6 ft.	6.00	54.00
6 to 7 ft.	7.50	

Halesia monticola MOUNTAIN SILVERBELL

Attractive tree with dark green leaves bearing in May quantities of pendulous bell-shaped flowers of glistening white.

3 to 4 ft.	5.00
-----------------	------

Laburnum vossii GOLDEN CHAIN

Small tree with dark green leaves bearing long racemes of golden yellow flowers. **For Spring planting only.**

5 to 6 ft.	6.00
6 to 7 ft.	8.50

Magnolia soulangeana SAUCER MAGNOLIA

Large cupped flowers of white, tinted pink, appear early in the spring making a conspicuous note in the landscape.

3 to 4 ft.	9.00
-----------------	------

MALUS — The Flowering Crab-apples

This group of small trees, attaining a height of eight to twenty feet, is one of the most satisfactory for northern New England. A wealth of bloom in May, varying from pure white to bright scarlet, is followed by another season of color in the fall, when the small fruits of yellow or red, lasting until freezing weather, provide very welcome food for the birds. **For late transplanting, after about May 1st, these should be dug with a ball of earth. Extra charge for balling 3 ft. size 90 cents; 4 ft. size \$1.50; 5 ft. size \$2.00; 6 ft. size \$3.00.**

- Malus baccata, variety** **FLOWERING CRAB**
A variety which we have not named, of upright pyramidal growth. White flowers succeeded by bright red, cherry-like fruit which remains for a long time.
- | | |
|-----------------|------|
| | Each |
| 4 to 5 ft. | 4.50 |
| 7 to 8 ft. | 9.00 |
- √ **Malus Almey** **ALMEY CRAB**
Large red flowers with white centers giving a charming effect. Dark red fruit in abundance carried until hard freezes. A new variety of merit.
- | | |
|-----------------|------|
| 5 to 6 ft. | 6.50 |
|-----------------|------|
- Malus atrosanguinea** **CARMINE CRAB**
Beautiful carmine buds and crimson flowers. Red fruit.
- | | |
|-----------------|------|
| 3 to 4 ft. | 3.50 |
| 4 to 5 ft. | 4.50 |
- √ **Malus eleyi** **ELEY CRAB**
Large, rose-pink flowers followed by red fruit, like cherries.
- | | |
|-----------------|------|
| 4 to 5 ft. | 4.50 |
|-----------------|------|
- √ **Malus floribunda** **JAPANESE FLOWERING CRAB**
Multitudes of pink buds opening to white. Small red fruit.
- | | |
|-----------------|------|
| 4 to 5 ft. | 4.50 |
|-----------------|------|
- √ **Malus hopa** **HOPA CRAB**
Rose-pink flowers and bronze green foliage. Fruit red.
- | | |
|-----------------|------|
| 4 to 5 ft. | 4.50 |
| 5 to 6 ft. | 5.50 |
- Malus lemoinei** **LEMOINE CRAB**
A valuable new hybrid with red flowers followed by red, cherry-like fruit.
- | | |
|-----------------|------|
| 4 to 5 ft. | 4.50 |
| 5 to 6 ft. | 5.50 |
- √ **Malus Red Silver** **RED SILVER CRAB**
Attractive reddish leaves with a silvery under-color. Red flowers followed by red fruit.
- | | |
|-----------------|------|
| 3 to 4 ft. | 3.50 |
|-----------------|------|
- Malus sargentii** **SARGENT CRAB**
Dwarf, spreading habit. Flowers white, fruit small and dark red.
- | | |
|-----------------|------|
| 2 to 3 ft. | 5.00 |
|-----------------|------|
- √ **Malus scheideckeri** **SCHEIDECKER CRAB**
Small pyramidal tree. Lovely semi-double soft pink flowers and yellow fruit.
- | | |
|-----------------|------|
| 3 to 4 ft. | 3.50 |
| 4 to 5 ft. | 4.50 |

(*Malus continued on next page*)

(Malus continued)

Malus theifera **TEA CRAB**
Fragrant, delicate pink flowers are borne in great abundance. Small yellow and red fruit.

	Each	Per 10
3 to 4 ft.	3.50	

Malus zumi calocarpa **ZUMI CRAB**
Rather dwarf and spreading habit. Pink buds opening into white flowers. Small round fruit of bright red.

3 to 4 ft.	4.50	
4 to 5 ft.	5.50	

Populus nigra italica **LOMBARDY POPLAR**
Very fast narrow growth. Useful for screens or boundary planting.

6 to 8 ft.	2.50	20.00
8 to 10 ft.	3.50	30.00
10 to 12 ft.	5.50	50.00

Salix niobe **GOLDEN WEEPING WILLOW**
A tree of rapid growth with slender, drooping branches. The yellow bark is very decorative during the winter. **For Spring planting only.**

3 to 4 ft.	1.50	12.50
6 to 8 ft.	4.00	36.00
8 to 10 ft.	7.00	65.00

Sorbus aucuparia **EUROPEAN MOUNTAIN ASH**
Small tree with fine foliage. Fragrant, white flowers are followed by clusters of scarlet berries in the early fall.

6 to 8 ft.	6.00	
8 to 10 ft.	8.50	

Syringa japonica **JAPANESE TREE LILAC**
Small tree growing to twenty-five feet tall. The large panicles of creamy white flowers appear in July and the foliage is attractive throughout the summer.

3 to 4 ft.	4.00	
-----------------	------	--

Ulmus americana **AMERICAN ELM**
Tall spreading tree with arching branches. Large specimens are unequalled in effect.

8 to 10 ft.	7.50	65.00
10 to 12 ft.	10.00	90.00
12 to 14 ft.	14.00	

Ulmus parvifolia **CHINESE ELM**
Very rapid growth and broad spreading habit. Smooth, light gray bark and medium green leaves smaller than American Elm.

8 to 10 ft.	7.50	67.50
10 to 12 ft.	10.00	

Deciduous Shrubs

Azalea calendulacea

FLAME AZALEA

The most colorful of our native Azaleas. The clusters of flowers range from lemon-yellow to fiery-red.

	Each	Per 10
15 to 18 in. B.&B.	4.00	37.50
18 to 24 in. B.&B.	6.00	55.00
2 to 2½ ft. B.&B.	7.00	

Azalea gandavensis

GHENT HYBRID AZALEA

Hybrids of our native Azaleas and Caucasian types noted for their brilliant colors.

12 to 15 in. B.&B.	4.00
15 to 18 in. B.&B.	5.00

Bouquet de Flore — pink and white. 12 in.

Coccinea Speciosa — orange-red. 12 in., 15 in.

Fanny — single rose-pink. 15 in.

Gloria Mundi — Orange-red. 12 in., 15 in.

Narcissiflora — double sulphur-yellow. 12 in.

Pallas — orange and salmon-red. 12 in.

Raphael de Smet — double, very soft blush-pink. 12 in.

Azalea Hinomayo

Broad, spreading habit of growth with small glossy leaves, semi-evergreen. Soft pink flowers in profusion.

12 to 15 in. B.&B.	5.00
-------------------------	------

(Azaleas continued on next page)



A HOME MADE MORE BEAUTIFUL BY OUR PLANTING

(Azaleas continued)

- Azalea kaempferi** **TORCH AZALEA**
A popular, free-flowering variety of intense coral-pink to flame-red. Very attractive as a landscape accent.
- | | Each | Per 10 | Per 100 |
|-------------------------|------|--------|---------|
| 15 to 18 in. B.&B. | 4.75 | 42.50 | |
| 18 to 24 in. B.&B. | 6.50 | | |
- Azalea ledifolia alba** **SNOW AZALEA**
Semi-evergreen. The large pure white blooms are especially attractive.
- | | | | |
|-------------------------|------|-------|--|
| 12 to 15 in. B.&B. | 4.00 | 37.50 | |
| 15 to 18 in. B.&B. | 5.50 | 50.00 | |
| 18 to 24 in. B.&B. | 7.25 | | |
- Azalea mucronulatum** **MONGOLIAN AZALEA**
Hardy, tall-growing variety bearing delicate rosy-lilac flowers. Blooms very early and makes an attractive display.
- | | | | |
|-------------------------|------|-------|--|
| 15 to 18 in. B.&B. | 4.50 | 42.50 | |
| 18 to 24 in. B.&B. | 5.50 | | |
- Azalea poukhanensis** **KOREAN AZALEA**
Spreading growth, semi-evergreen. The large rose-purple flowers appear very early.
- | | | | |
|-------------------------|------|-------|--|
| 12 to 15 in. B.&B. | 4.00 | 37.50 | |
| 15 to 18 in. B.&B. | 5.00 | | |
- Azalea schlippenbachi** **ROYAL AZALEA**
Large (3 inches) blooms of delicate shell-pink in May. Attractive broad leaves turning yellow in autumn. Hardy.
- | | | | |
|-------------------------|------|--|--|
| 12 to 15 in. B.&B. | 5.00 | | |
| 15 to 18 in. B.&B. | 6.00 | | |
- Azalea vuykiana hybrids** **VUYK HYBRID AZALEA**
Semi-evergreen type of rather dwarf bushy growth. Considered hardier than many of the evergreen azaleas for New England plantings. Flowers 2 inches in diameter in May and June.
- | | | | |
|-------------------------|------|--|--|
| 12 to 15 in. B.&B. | 5.00 | | |
| 15 to 18 in. B.&B. | 6.50 | | |
| 18 to 21 in. B.&B. | 8.50 | | |
- Beethoven** — reddish-violet with deeper markings. 15 in., 18 in.
- Palestrina** — white, greenish-yellow markings. 12 in., 15 in.
- Sibelius** — orange-red with darker markings. 12 in., 15 in.
- Berberis thunbergii** **JAPANESE BARBERRY**
Popular for low hedges and borders of shrub plantings as barriers against dogs. Bright scarlet fruit.
- | | | | |
|-------------------|-----|------|-------|
| 18 to 24 in. | .75 | 6.50 | 55.00 |
|-------------------|-----|------|-------|

Berberis t. atropurpurea**RED-LEAVED BARBERRY**

Very attractive with bronze-red foliage all summer.

	Each	Per 10
15 to 18 in.	1.10	10.00

Buddleia, Charming**BUTTERFLY BUSH**

Long spikes of soft lilac-pink flowers in late summer.

2 yr. plants in pots	1.15	10.00
3 yr. plants in pots	1.50	

Buddleia, Ile de France

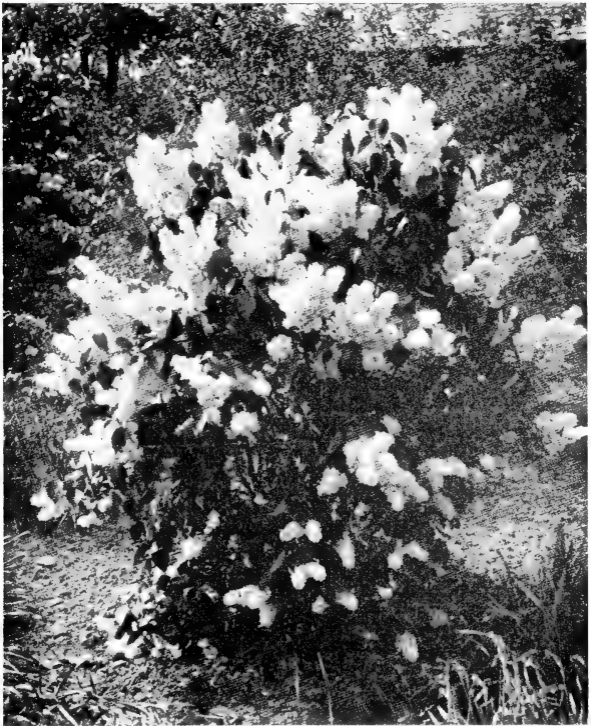
Deep rosy-lilac flowers in August to frost.

2 yr. plants in pots	1.15	10.00
3 yr. plants in pots	1.50	

Buddleia, White Bouquet (Pat. No. 536)

New. Large spikes of white flowers.

2 yr. plants in pots	1.25	11.00
3 yr. plants in pots	1.60	



A SPECIMEN HYBRID LILAC ADDS INTEREST TO YOUR GARDEN

- Calycanthus floridus** **SWEETSHRUB**
An old favorite. The unusual, reddish-brown flowers are delightfully fragrant.
- | | Each | Per 10 |
|------------------|------|--------|
| 1½ to 2 ft. | 1.50 | 13.50 |
| 2 to 3 ft. | 2.25 | 20.00 |
- Clethra alnifolia** **SUMMERSWEET**
Dark glossy green foliage and upright spikes of very white flowers in late summer. Good in shade.
- | | | |
|-----------------|------|-------|
| 2 to 3 ft. | 1.50 | 13.50 |
|-----------------|------|-------|
- Cornus alba** **RED-BARKED DOGWOOD**
Large shrub, bark bright red in winter months.
- | | | |
|-----------------|------|-------|
| 2 to 3 ft. | 1.35 | 11.00 |
| 4 to 5 ft. | 2.50 | |
- Cotoneaster adpressa praecox** **EARLY COTONEASTER**
Spreading growth with arching branches and dark green foliage. Large, bright red berries throughout the autumn.
- | | | |
|-------------------|------|--|
| 18 in. B.&B. | 4.50 | |
| 2 ft. B.&B. | 6.00 | |
- Cotoneaster apiculata** **CRANBERRY COTONEASTER**
Low spreading growth forming a compact shrub. The large bright red berries will persist well into the winter.
- | | | |
|--------------------------|------|--|
| 9 to 12 in. potted | 2.50 | |
|--------------------------|------|--|
- Cotoneaster divaricata** **SPREADING COTONEASTER**
Medium height with arched, spreading branches. Leaves small and shining green; dark red ornamental fruit.
- | | | |
|------------------------|------|-------|
| 1½ to 2 ft. B.&B. | 2.50 | 22.50 |
| 2 to 3 ft. B.&B. | 3.25 | 30.00 |
- Cotoneaster horizontalis** **ROCK COTONEASTER**
Dwarf spreading growth. Small shining green leaves with small pink flowers followed by scarlet berries.
- | | | |
|--------------------------|------|-------|
| 6 to 9 in. potted | 1.25 | 10.00 |
| 9 to 12 in. potted | 2.25 | 20.00 |
- Cydonia japonica** **FLOWERING QUINCE**
The very early blossoms of red or orange are followed by large yellow fruit.
- | | | |
|-----------------|------|-------|
| 2 to 3 ft. | 1.75 | 16.00 |
|-----------------|------|-------|
- Deutzia gracilis** **DWARF DEUTZIA**
Small, compact bush with single white flowers in May.
- | | | |
|-------------------|------|-------|
| 12 to 15 in. | 1.20 | 11.00 |
| 15 to 18 in. | 1.45 | 13.00 |

Eleagnus angustifolia **RUSSIAN OLIVE**

Grayish green foliage, silvery yellow fruit. Very hardy for seashore planting.

	Each	Per 10
2 to 3 ft.	1.50	13.50
3 to 4 ft.	2.50	22.50

Euonymus alatus **CORK-BARKED EUONYMUS**

Very attractive. Of symmetrical growth the limbs heavily encrusted with corky wings. Brilliant red foliage in the fall.

2 to 2½ ft.	2.75	
------------------	------	--

Euonymus a. compacta **DWARF EUONYMUS**

A dwarf form of *E. alatus*. The foliage turns fiery red in the autumn.

1½ to 2 ft.	2.75	25.00
2 to 2½ ft.	3.25	30.00
2½ to 3 ft.	4.25	40.00

Euonymus yedoensis **BURNING BUSH**

Broad heavy growth. The autumn foliage is deep red and the clusters of fruit orange and scarlet.

3 to 4 ft.	2.00	18.00
-----------------	------	-------

Forsythia intermedia spectabilis**SHOWY GOLDEN BELL**

Clear yellow flowers in abundance in early spring.

2 to 3 ft.	1.30	12.00
3 to 4 ft.	1.50	14.00
4 to 5 ft.	2.50	

Forsythia Lynwood Gold

Masses of golden yellow flowers covering the branches in early spring. Strong bushy growth. A fine new addition.

3 to 4 ft.	2.25	20.00
-----------------	------	-------

Forsythia Spring Glory

A new variety bearing pale yellow flowers in great profusion, literally covering the twigs.

3 to 4 ft.	1.85	17.00
-----------------	------	-------

Forsythia suspensa fortunei**FORTUNE FORSYTHIA**

Large spreading bush with golden-yellow flowers.

2 to 3 ft.	1.30	12.00
3 to 4 ft.	1.50	14.00

Hibiscus syriacus **ALTHEA-ROSE OF SHARON**

Large flowers in August and September. **These should be planted in the spring only.**

Single Blue, Single Red and White	1.75	16.00
--	------	-------

Hydrangea arborescens grandiflora**HILLS OF SNOW**

Large flat heads of white in July and August.

	Each	Per 10	Per 100
Extra strong plants	1.50	13.50	

Hydrangea paniculata grandiflora**COMMON HYDRANGEA**

Pyramidal heads of flowers, white changing to rose-pink.

2 to 3 ft.	1.50	13.50	
-----------------	------	-------	--

Ilex verticillata**WINTERBERRY**

Large shrub with bright red berries in the late fall.

1½ to 2 ft.	1.35	12.00	
------------------	------	-------	--

Kerria japonica pleniflora**DOUBLE KERRIA**

An attractive shrub with bright green twigs and leaves. Bright butter-cup yellow flowers in early spring.

1½ to 2 ft.	2.00	18.00	
------------------	------	-------	--

Kolkwitzia amabilis**BEAUTY BUSH**

The slender, arching branches are covered with small bell-shaped flowers of soft salmon-pink in June.

2 to 3 ft.	1.75	16.00	
3 to 4 ft.	2.50	22.50	

Ligustrum ibolium**IBOLIUM PRIVET**

Heavy glossy foliage and upright growth, resembling California Privet but much more hardy.

2 to 3 ft.	0.00	4.00	35.00
3 to 4 ft.	0.00	5.00	42.00

Lonicera tatarica rosea**TARTARIAN HONEYSUCKLE**

Large bush with arching branches which are covered in May with deep pink flowers. Bright red berries.

2 to 3 ft.	1.30	12.00	
3 to 4 ft.	1.75	16.00	
4 to 5 ft.	2.50		

Lonicera zabeli**RED HONEYSUCKLE**

Deep red flowers make a striking display in May.

2 to 3 ft.	1.50	13.50	
3 to 4 ft.	2.00	18.00	

Myrica pensylvanica**BAYBERRY**

Attractive low shrub bearing masses of grayish white berries well into winter. Will do well in poor soil.

15 to 18 in. B.&B.	2.75	25.00	
18 to 24 in. B.&B.	3.25	30.00	
2 to 2½ ft. B.&B.	3.75		

Philadelphus coronarius **MOCKORANGE**

The well-known "Syringa". Large shrub bearing pure white single blossoms in June and July.

	Each	Per 10	Per 100
2 to 3 ft.	1.30	12.00	
3 to 4 ft.	1.65	15.00	
4 to 5 ft.	2.25	20.00	
5 to 6 ft.	3.25		

Philadelphus virginalis **VIRGINAL SYRINGA**

Snowy white, semi-double flowers in June and occasionally throughout the summer. One of the best.

2 to 3 ft.	1.60	14.50
3 to 4 ft.	2.10	19.00

Prunus glandulosa **DOUBLE-FLOWERING ALMOND**

Masses of double pink rosettes, appearing before the leaves, make a colorful spot in the spring landscape.

3 to 4 ft. own root ..	2.25	20.00
------------------------	------	-------

Prunus maritima **BEACH PLUM**

Of spreading habit for seaside planting although it may be grown in deeper soil. Masses of white flowers in early spring are followed with reddish plums much used for jelly.

1½ to 2 ft.	1.50	13.50
------------------	------	-------

Prunus tomentosum **MANCHU CHERRY**

Large bush with pale pink flowers appearing just before the leaves. The small cherries are both ornamental and edible.

2 to 3 ft.	1.75	16.00
-----------------	------	-------

A FLOWERING CRABAPPLE FOR COLOR IN YOUR GARDEN



Rhamnus carthartica **BUCKTHORN**

Hardy, large-growing shrub with small dark green leaves and black berries.

6 to 10 ft. B.&B. bushy plants, \$6.00 to \$15.00 each.

Rhus cotinus **SMOKETREE**

Large branching shrub with filmy purplish flower heads.

	Each	Per 10
1½ ft.	1.40	
2 ft.	2.25	

Rosa rugosa (see Various Roses)**Salix discolor, Rose Gold** **PUSSY WILLOW**

A selection of the well-known Pussy Willow, producing very large catkins tinted with pink and yellow lights. May be easily forced.

2 to 3 ft.	1.25	11.00
-----------------	------	-------

Spiraea bumalda, Anthony Waterer**WATERER SPIREA**

Dwarf variety with flat heads of carmine-pink flowers. June to August.

1½ to 2 ft.	1.60	14.50
2 to 3 ft.	2.10	18.50
3 to 4 ft.	2.75	

Spiraea thunbergi **THUNBERG SPIREA**

A graceful shrub with slender arching branches and narrow leaves. A profusion of small white flowers in early spring.

2 to 3 ft.	1.75	16.00
4 to 5 ft.	3.00	27.50
5 to 6 ft.	3.75	

Spiraea trichocarpa **KOREAN SPIREA**

Clusters of small white flowers borne abundantly. Somewhat resembles *S. van houttei*, but blooms later.

2 to 3 ft.	1.35	12.00
3 to 4 ft.	1.90	17.50
4 to 5 ft.	2.75	25.00

Spiraea van houttei **VAN HOUTTE SPIREA**

Very graceful shrub, the arching branches bending beneath the masses of small white blossoms.

2 to 3 ft.	1.50	13.50
3 to 4 ft.	1.75	16.00

Symphoricarpos albus **SNOW BERRY**

Small pink flowers, followed by ornamental white marble-shaped fruit which continues into early winter.

2 to 3 ft.	1.40	12.50
-----------------	------	-------

Syringa chinensis **CHINESE LILAC**

Graceful, arching branches with narrow leaves. Large heads of rosy-lavender flowers.

2 to 3 ft.	1.65	15.00
3 to 4 ft.	2.00	18.00

Syringa vulgaris **COMMON PURPLE LILAC**

Deservedly popular on account of its abundance of bloom and its dark green foliage seldom affected by insects.

	Each	Per 10
2 to 3 ft. extra bushy ..	1.85	17.00
3 to 4 ft. extra bushy ..	2.50	22.50
4 to 5 ft. extra bushy ..	3.75	

Syringa v. alba **WHITE LILAC**

White-flowered type forming vase-shaped plants.

2 to 3 ft.	2.10	19.00
-----------------	------	-------

Syringa v. Hybrids

Our collection of these magnificent flowering plants embraces a wide range of color from pure white, pink and lavender to deep reddish-purple. Our "Own root" plants ensure strong healthy growth for many years.

2 ft.	2.50	22.50
2½ ft.	3.10	29.00
3 ft.	3.75	35.00
3½ ft.	4.50	40.00
4 ft.	6.00	
5 ft.	7.50	

After May 1st these may be dug with a ball of earth and burlapped. The additional cost of handling in this way will be as follows:

Plants 2 to 3 ft. \$.35 each	4 to 5 ft. \$.75 each
Plants 3 to 4 ft. .60 each	5 to 6 ft. 1.00 each

SINGLE VARIETIES

Congo 2 ft., 2½ ft.	A beautiful lively deep red, slow growth.
Lucie Baltet 2 ft.	Medium-sized flowers of flesh-pink. The nearest to true pink which we have seen.
Ludwig Spaeth 2 ft., 2½ ft.	Extra fine, deep purplish-red.
Macrostachya 3 ft., 3½ ft., 4 ft.	Pale lavender-pink nearly approaching flesh color.
Mme. Florent Stepman 2 ft., 2½ ft., 3 ft., 3½ ft.	Broad, full heads of white, faintly tinted cream at base.
Marie Legraye 2 ft., 2½ ft., 3 ft.	Large flowers of white in pyramidal heads. Bush of medium height.
President Lincoln 2 ft., 2½ ft., 3 ft.	Narrow pyramidal heads of medium-sized flowers of Wedgwood blue.
Vestale 2 ft., 2½ ft., 3 ft.	Very large heads of ivory buds opening into pure white flowers.
Volcan 2 ft., 3 ft., 3½ ft.	Long, loose heads of deep reddish-purple which do not fade. Late blooming.

(Double Varieties on next page)

(Lilacs continued)

DOUBLE VARIETIES

- Belle de Nancy** Brilliant satiny rose with lighter centers.
2½ ft., 3 ft., 3½ ft., 4 ft.
- Duc de Massa** Red-violet, turning to red-dish-lavender.
2 ft.
- Georges Bellair** Large flowers in broad pyramidal clusters. Reddish buds opening into rosy-carmine flowers.
2 ft., 2½ ft.
- Katharine Havemeyer** Immense semi-double flowers of light blue flushed red-dish-lilac.
2 ft., 2½ ft.
- Mme. Lemoine** An attractive ivory white. Upright in habit and growth.
2 ft., 2½ ft.
- Paul Thirion** Massive heads of rosy-lilac with lighter tints.
2 ft., 2½ ft., 3½ ft.
- President Grevy** Large panicles of beautiful light blue.
2 ft., 2½ ft., 3 ft., 3½ ft., 4 ft.
- President Poincaire** Exceptionally large flowers of reddish-lavender in massive heads.
2 ft., 2½ ft.
- Waldeck-Rousseau** Large spikes of pink and white. Somewhat dwarf.
2½ ft., 3 ft.

↳ **Vaccinium corymbosum**

HIGHBUSH BLUEBERRY

Bushy compact growth, foliage colored deep red after frosts. The luscious blue berries make these attractive plants for the border, appealing both to the eye and taste.

	Each	Per 10
2 to 3 ft. B.&B.	2.50	22.50
3 to 4 ft. B.&B.	3.25	30.00

↳ **Vaccinium hybrid varieties** (See Fruit Sec. Page 33)

↳ **Viburnum americanum**

AMERICAN CRANBERRYBUSH

White flowers and bunches of large red berries, which remain nearly all winter.

2 to 3 ft.	1.50
-----------------	------

WHY NOT HAVE CHERRY HILL LANDSCAPE YOUR HOME GROUNDS



Viburnum carlesi **MAYFLOWER VIBURNUM**

The clusters of small pink and white flowers in early May resemble the Mayflower in color and sweet fragrance.

	Each	Per 10
15 to 18 in. B.&B.	3.25	30.00
18 to 24 in. B.&B.	4.25	38.50
2 to 2½ ft. B.&B.	5.25	47.50

Viburnum dentatum **ARROW-WOOD**

Compact, large-growing shrub. Flat heads of white flowers succeeded by many clusters of blue-black berries.

2 to 3 ft.	1.50	14.00
-----------------	------	-------

Viburnum dilatatum **LINDEN VIBURNUM**

Flat clusters of flowers in May or June. In the fall the brilliant red berries make this one of our most attractive fall shrubs.

2 to 3 ft.	2.50	
3 to 4 ft.	3.50	32.00

Viburnum opulus sterile **COMMON SNOWBALL**

Many round clusters of white flowers, like small snowballs, are borne in May and June.

2 to 3 ft.	1.60	14.50
-----------------	------	-------

Weigela rosea **PINK WEIGELA**

Showy, rose-pink flowers in abundance.

2 to 3 ft.	1.50	13.50
3 to 4 ft.	2.00	18.00
4 to 5 ft.	2.50	

Weigela vaniceki **RED WEIGELA**

A fine hardy variety bearing deep red flowers in abundance.

2 to 3 ft.	1.50	13.50
3 to 4 ft.	2.00	18.00
4 to 5 ft.	2.75	

**FOR LATE SPRING AND EARLY
FALL PLANTING**

The prices of Deciduous Shrubs other than those specified "B. & B." are for plants dug with bare roots. Between May 15th and October 15th when the plants are in leaf, shrubs may be dug with a ball of earth and burlapped. This assures less wilting and delay in growth. The additional cost for handling in this way will be:

	EACH		EACH
Plants 18 to 24 in. .25		4 to 5 ft.75
Plants 2 to 3 ft. .35		5 to 6 ft.	1.00
Plants 3 to 4 ft. .60		6 to 7 ft.	1.50

Vines

Ampelopsis quinquefolia

AMERICAN WOODBINE

Especially decorative in the fall, with its blue berries and red and yellow foliage.

	Each	Per 10
Strong Plants	\$1.00	\$ 9.00
Potted Plants after May 10	1.40	13.00

Ampelopsis tricuspidata (Veitchi) BOSTON IVY

Dark glossy green leaves. Clings closely to brick or stone walls.

2 yr.	1.00	9.00
Potted Plants after May 10	1.40	13.00

Aristolochia siphon DUTCHMAN'S PIPE

Excellent for a dense screen, as the broad leaves overlay and make a complete shade.

Strong plants, potted 2.00

Celastrus scandens BITTERSWEET

Twining vine, bearing scarlet and orange berries in late fall.

Strong Plants	1.00	9.00
---------------------	------	------

Clematis paniculata

SWEET AUTUMN CLEMATIS

Very rapid in growth with masses of small white flowers, highly perfumed. August and September.

Strong plants, potted 1.50 14.00

Hedera helix baltica (Hardy English Ivy)

See Evergreen shrubs

Lonicera heckrottii GOLDEN HONEYSUCKLE

Trumpet-shaped flowers of flame-pink with yellow throat are produced throughout the summer. Strong rapid growth.

2 yr. potted	1.75	16.00
--------------------	------	-------

Lonicera japonica halliana

HALL'S HONEYSUCKLE

Yellow and white flower. The foliage is evergreen in protected places. Excellent for a ground cover.

2 yr.60	5.50	45.00
------------	-----	------	-------

Polygonum auberti CHINA FLEECEVINE

Fast, twining growth. Masses of fine, lacy white flowers in late summer and fall.

2 yr. potted	1.50	13.50
--------------------	------	-------

Vinca minor (Periwinkle) (See Evergreen shrubs)**Wistaria frutescens****WISTARIA**

Long, drooping racemes of purple flowers. Fine for a trellis or pergola. Rooted layers from flowering plants.

	Each	Per 10
2 yr.	2.00	18.00
Potted Plants	2.50	22.50



A PLEASANT PLACE TO SPEND AN AFTERNOON



Fruit Trees

The home grounds are scarcely complete without some fruit trees. The flavor of fruit ripened on the plant has a delicacy which more than compensates for the care expended in cultivation.

Our list comprises varieties which we believe are satisfactory for this latitude.

Fruit trees, except Apples and Pears, should be planted in the Spring only.

APPLES

	Each	Per 10
2 yr., 5 to 7 ft.	\$1.50	\$14.00

Summer Varieties

- ✓ **Red Astrachan** — One of the early reds. Very rich and juicy. Flesh slightly acid.

Fall Varieties

- ✓ **Cortland** — One of the McIntosh seedlings, resembling the McIntosh a great deal and even a better keeper.
- ✓ **Gravenstein** — An old-time favorite, extra fine. Of large size with a delicate striping of yellow and red.
- ✓ **McIntosh** — Bright red with crisp white flesh. One of the best eating apples.

Winter Varieties

- ✓ **Baldwin** — An old New England favorite. Deep red and of good size. Keeps well through the winter.
- ✓ **Delicious** — A choice winter apple with a sprightly aroma and as its name implies is really delicious in taste.
- ✓ **Northern Spy** — Large, yellow, heavily striped red. Flesh crisp and juicy.

DWARF APPLES

These are grafted on Malling No. 9 roots which produce dwarf trees, and bear at an earlier age. Valuable for home grounds where space is limited.

2 yr.	\$3.00
------------	--------

Baldwin McIntosh Red Delicious

√
DWARF PEARS

Grafted on dwarfing stock, these bear at an earlier age.

	Each	Per 10
2 yr.	\$2.50	\$22.50

Bartlett

Clapp's Favorite

PEARS

No. 1, 11-16 in. cal., 4 to 6 ft. \$1.90 \$18.00

- ↘ **Bartlett**—An early variety. Considered one of the sweetest of all. Excellent for preserving or eating.
- ↘ **Beurre Bosc** — Late and a good keeper. Dark russet and very sweet.
- ↘ **Clapp's Favorite** — A very early variety and exceptionally good eating.
- ↘ **Seckel** — Small, russet, very sweet and juicy.

PEACHES

No. 1, 4 to 6 ft. \$1.60 \$15.00

- ↘ **Carman** — An early peach with white flesh and red cheek.
- ↘ **Elberta** — Considered one of the best shippers and great for canning. Ripens in mid-September.
- ↘ **Golden Jubilee** — A new very early yellow-flesh variety of fine shape and color.
- ↘ **J. H. Hale** — An exceptionally nice yellow peach. Mid-September.
- ↘ **Hale Haven** — Very handsome fruit of contrasting red and yellow. Early.
- ↘ **Red Haven** — Early variety with a reddish skin and yellow flesh. Sweet and of excellent flavor.
- ↘ **Valiant** — Large, yellow, flushed with red. Early midseason.

CHERRIES

No. 1, 4 to 6 ft. \$2.50

- ↘ **Black Tartarian** — Large sweet fruit, almost black.
- ↘ **Windsor** — Light red, firm but juicy. Sweet.

PLUMS

	Each	Per 10
No. 1, 11-16 in. cal. 5 to 6 ft.	\$1.75	\$15.00

✓ **Abundance** — Extra good-sized red plum and very popular for both eating and canning.

✓ **Burbank** — Dark red of good quality. Very valuable as a canner or for table sauce.

BLUEBERRIES

The following varieties have been selected for their heavy-bearing qualities of exceptionally large fruit. For planting in the garden or shrub border.

1½ to 2 ft. Potted	\$1.90	\$18.00
--------------------------	--------	---------

✓ **Burlington** — Late. Large berry.

✓ **Dixie** — Midseason. Large attractive fruit.

✓ **Pemberton** — Midseason. Large fruit of fine flavor.

✓ **Rancocas** — Early. Produces freely on tall stems.

✓ **Rubel** — Late. Upright bush, medium blue. Good keeping quality.

GRAPEVINES

While some of these are old standbys, yet they are still worthy of a place in any garden.

Strong 2 yr.	\$.70	\$ 6.00
Potted Plants for late Spring planting	1.10	

✓ **Concord** — Late, blue, an old popular variety.

✓ **Fredonia** — The earliest blue grape, fruit large and sweet.

✓ **Niagara** — Large, white, honey-sweet.

RASPBERRIES

	Per 10	Per 25	Per 100
Strong Transplants	\$2.50	\$6.00	\$22.00

✓ **Indian Summer** — Fine, new Everbearing variety of good quality.

✓ **Latham** — Large, delicious, red fruit.

ASPARAGUS

	Per 25	Per 100
2 yr	\$1.75	\$ 5.00
3 yr.	2.00	6.50

Mary Washington — A new introduction, producing large quantities of tender stalks.



COME INTO THE GARDEN



Roses

In our northern climate, roses must be selected with a thought for hardiness and vigor as well as the bright color effects desired in the garden. Our list covers a wide range of color and we have found these to be vigorous. In this latitude the plants should be protected for the winter by heaping earth around them and then covering with a mulch so that they are covered six inches deep. In the spring prune back to live wood.

All our Roses are potted in generous-sized containers. In planting, slit the paper pot leaving the earth intact and plant about three inches deeper. They will then be well-established to grow rapidly for bloom in June and throughout the summer.

Our potted Roses will not be ready for planting in your garden before May 10th when they will be in leaf and bud. We would suggest, however, that you place your order early so that we may reserve for you the kinds you would like, as sometimes by May 10th some varieties are all sold out.

As roses need more aftercare than flowering shrubs, we cannot be responsible for their growth after they leave the nursery and any complaints must be made within ten days after being received.

We may be out of certain kinds and will substitute varieties similar in color unless otherwise directed. Please advise us if you do not wish substitutes.

We do not recommend the fall planting of roses for this latitude.

HYBRID TEA ROSES

These will give an abundance of bloom from June until frost. They should be liberally fertilized every year and given some protection from the sun and frost during the winter.

	Each	Per 10
Potted Plants	\$1.80	\$16.50

(Unless otherwise noted)

Available after May 10th

Blanche Mallerin (Patent No. 594) — Fine, new pure white flowers with a satiny sheen. Long buds opening into well-formed blooms. Very fragrant. \$2.50 each.

Betty Uprichard — Beautiful coppery pink with orange shadings. Back of petals carmine-pink. One of the best.

Christopher Stone — Brilliant scarlet of fine form and habit. Very attractive.

- Condesa de Sagato** — Deep coppery pink petals colored golden-yellow on the reverse side making charming two-toned flowers.
- Countess Vandal**—Exquisite golden salmon-pink, coppery lights. Buds long and pointed.
- Crimson Glory** — Deep vivid crimson blooms on vigorous bushes. Very fragrant.
- Eclipse** — Distinctive tapering buds of yellow. Abundant bloomer. One of the best all-purpose yellow Roses.
- Edith Nellie Perkins** — Rich salmon-pink buds, inside of petals lighter, making a delightful contrast.
- Etoile de Holland** — One of the world's best. Very hardy and vigorous. Beautiful crimson-red blossoms.
- Forty Niner** (Patent No. 792) — A bicolor, with outside of petals chrome-yellow and inside vivid oriental-red changing to cherry-red as it ages. \$2.50 each.
- Frau Karl Druschki** — One of the very best of the pure white varieties.
- K. A. Victoria** — Beautiful, well-formed, pointed buds of creamy-white.
- Margaret McGredy** — Brilliant red, with yellow lights at base of petals. Blooms freely.
- McGredy's Scarlet** — Large light crimson with golden lights at base of petals. Blooms freely throughout the summer.
- McGredy's Yellow** — Long pointed buds of butter-cup yellow. Blooms freely.
- Mission Bells** (Patent No. 923) — Beautiful shade of deep salmon-pink changing to clear shrimp-pink. Very hardy. \$2.50 each.
- Mojave** (Patent No. 1176)—Apricot-orange with nasturtium-red and scarlet. Long pointed buds. \$3.00 each.
- Mrs. P. S. duPont** — Continuous bloomer on extra strong canes. Flowers deep golden-yellow, both in bud and flower.
- New Yorker** (Patent No. 823) — An enormous clear, sparkling, red rose that holds its color. Buds darker in color than the open blooms. Very exceptional. \$2.50 each.
- Peace** (Patent No. 591) — Oval buds golden-yellow etched with pink. As they open, the color changes from canary-yellow, to pale golden, to iridescent cream. Flowers are 5 in. across. \$2.50 each.
- Pink Dawn** — Exquisite pink with deeper shadings, giving an abundance of fragrant bloom.

Pres. Herbert Hoover — Strong grower, bearing beautiful flowers of soft pink, orange and gold all blended together in one beautiful bloom.

Radiance — A strong, vigorous and hardy variety bearing large rose-pink flowers, globular in shape.

Red Radiance — Rosy red variety. Fully equal in all points to the above.

Rose of Freedom (Patent No. 791) — Deep red blooms with delightful true rose fragrance. The blooms are normally borne singly on strong stems and the new wood is usually thornless. Vigorous upright bush with disease-resistant foliage. \$2.25 each.

Roslyn — Deep golden-yellow, reverse orange. Very attractive.

Soeur Therese — Long pointed buds of rich yellow with reddish markings at base of petals. Fragrant.

Talisman — Pointed buds of yellow with orange and scarlet markings on face of petals.

CLIMBING ROSES

	Each	Per 10
Potted Plants	\$1.80	\$16.50

(Unless otherwise noted)

Available after May 10th

Aloha (Patent No. 948)—Deep coral-pink buds opening into very full, rich rose-pink flowers and silvery-pink on the inside of the petals. The secondary buds do not open until the first flowers are nearly finished. Grows in long-stemmed clusters. \$2.75 each.

American Pillar — Huge clusters of single bright pink flowers with white centers.

Blaze — Bright scarlet-red flowers of large size borne freely on strong stems. Often a recurrent bloomer.

Dorothy Perkins — Exceptionally strong, hardy growth bearing masses of small bright pink flowers in clusters.

Excelsa — Superior in hardiness to the well-known crimson rambler and even of a better color. Strong dark crimson.

High Noon (Patent No. 704) — Fine, new yellow climber. A recurrent bloomer. \$2.75 each.

King Midas (Patent No. 586) — Hybrid-tea-like flowers in clusters. Red flushed bud opening into yellow-golden blooms. \$2.50 each.

Mary Wallace — Charming flowers of deep, warm pink, borne profusely on long stems. Excellent for cutting.

- New Dawn** — A climbing rose which is ever-blooming. Delicate deep blush or shell-pink of large size.
- Paul's Scarlet** — Large flowers on long stems are borne in profusion. Bright scarlet-red making an effective display.
- Primrose** — Clusters of canary-yellow flowers which hold their color well until the petals drop. Plant hardy and vigorous.
- Silver Moon** — A strong grower with dark green, glossy foliage, bearing a multitude of pure white flowers. Single.
- White Dawn** — Pure white, pillar-type blooms fully double, grown in clusters.

DWARF AND FLORIBUNDA ROSES

These Roses are hardier and of more vigorous habit than Hybrid Teas. When established, they seldom need replacing for a long period of years. The flowers, many of them the size of Hybrid Teas, are carried in thick clusters and bloom profusely the entire season until heavy frosts.

	Each	Per 10
Potted Plants	\$1.80	\$16.50

(Unless otherwise noted)

Available after May 10th

- Betty Prior** (Patent No. 340) — Single carmine buds opening into deep shell-pink flowers. \$2.00 each.
- Chatter** (Patent No. 739) — Bright crimson flowers 2½ to 3 inches across borne in clusters. Each bud opens slowly, which makes the cluster last for several days. \$2.00 each.
- Donald Prior** (Patent No. 377) — Semi-double bloom of deep glowing red. \$2.00 each.
- Else Poulsen** — Semi-double bright rose-pink flowers in abundance. Strong clean growth.
- Fashion** (Patent No. 789) — Entirely new color in Roses — luminous coral suffused with gold. Greatest award winner of all times. \$2.50 each.
- Floradora** — Buds pinkish-orange opening into a brilliant cinnabar-red touched with orange-scarlet and geranium-red. Double flowers.
- Goldilocks** (Patent No. 672) — Rich, golden-yellow flowers, cupped in early stages. Up to 3½ in. across. \$2.00 each.
- Jiminy Cricket** (Patent applied for) — Tangerine-red buds, opening to coral-orange and finishing in a pink coral. Glossy green foliage and vigorous upright growth. Pleasing old rose fragrance. \$3.00 each.

Lafayette Improved — Double flowers borne freely in clusters on long stems. Bright cherry-red.

Lilibet (Patent No. 1209) — Light rose melting into dawn pink. Well-formed small flowers in clusters covering a very bushy plant with fine foliage. \$2.50 each.

Ma Perkins (Patent No. 1143) — Coral shell-pink, fortified by shades of red in the outer petals and a touch of yellow at the base. Very fragrant. New \$2.50 each.

Pink Bountiful (Patent No. 601) — Soft pink, double flowers grown in clusters. When fully open the blooms are up to 3 in. across looking like miniature Hybrid Tea roses. \$2.00 each.

Pinocchio (Patent No. 484) — Buds rich salmon flushed with gold at base, gradually changing to soft clear pink as the flowers open. Blooms in great clusters and flowers are like small Hybrid Tea roses. 1½ in. across. \$2.00 each.

Red Pinocchio (Patent No. 812) — Rich scarlet blooms 3½ in. across borne in clusters. Bushy upright growth and free flowering. Wild rose fragrance. \$2.00.

Summer Snow (Patent No. 416) — Clusters of pure white, dainty flowers 3½ in. across. Very outstanding in the garden. \$2.00 each.

Vogue (Patent No. 926) — Immense clusters of perfectly formed, Hybrid-tea like blooms up to 4 in. across. Brilliant cherry-coral. \$2.50 each.

Yellow Pinocchio (Patent No. 992) — Apricot-yellow blooms. Very sturdy, healthy and free-flowering. \$2.00 each.

VARIOUS ROSES

Hugonis — Strong fast growth and may be used in a shrub planting. The exquisite soft yellow single flowers are borne in sprays in May and June. 18 to 24 in. potted plants \$1.75 each, \$16.00 per ten; 2 to 3 ft. field grown \$2.25 each; 3 to 4 ft. field grown \$3.00 each.

Rosa rugosa — Spreading shrub with glossy green foliage. Flowers single crimson followed by ornamental scarlet fruits. Good for seashore or in exposed plantings. 18 to 24 in. \$1.35 each, \$12.50 per ten; 2 to 3 ft. \$1.75 each. All field grown.



Peonies

Wherever one desires continuing bloom year after year from plants in the garden, we recommend the planting of Peonies. Hardy in almost all parts of this country and Canada, the vigor of the plants and the wealth of blooms in their lovely shades of white, pink and rich reds give delightful effects both in the garden and as cut flowers. When once established, the plants increase in size and quality for many years and need not be disturbed. They will persist in many localities where other perennials fail to grow and their increasing use testifies to their popularity.

Peonies are especially decorative as cut flowers and many amateur enthusiasts give thousands every year to churches and hospitals.

We have endeavored to consistently maintain our free-blooming Cherry Hill Strain by selective propagation and the large, vigorous plants which we furnish give satisfactory results.

Culture of Peonies

Peonies will grow in almost any location, but do best when not planted too near large trees. However, where they are given some shade from the hot afternoon sun, the delicate colors may be retained. A good garden soil of loamy texture, where there is drainage, will produce satisfactory roots and flowers. In this type of soil, no especial preparation is necessary except to loosen and break up any lumps.

You may use any garden fertilizer available or bone meal. Wood ashes containing lime and potash have proved very satisfactory. The amount will be determined by the size of the plant, but a good handful is a rough measure. Too much rain may cause botrytis, a fungus which causes the stems to wilt and turn black. We find that ground limestone is one of the best correctives and this may be used freely. The diseased stems should be burned.

The roots should be planted so that the buds are about two inches below the surface when the ground is settled around them. Too deep planting will result in good foliage but no blooms. This is usually the cause for lack of blooms. Do not attempt to replant Peonies in soil where they have grown before, and if the same location is desired, the earth should be removed and replaced by fresh earth from another part of the garden. When the buds attain about an inch in size, they exude a sticky honey which is attractive to ants, but these seldom do harm and will disappear in a short time.

Peonies do best if transplanted in the autumn months from **September** until **November** when the buds for the next year are dormant. They may be planted in the spring, but it should be in early April before the buds have pushed through the ground. The first season will not produce large and often not typical blooms. They should be treated as permanent plants and will grow and thrive from ten to twenty years in one location.

SHIPPING CHARGES

When shipping Peonies, we cut off the tops leaving compact plants. Except in large quantities these may usually be sent by parcel post more cheaply than by express. If you **wish your order shipped in this way, please include 30 cents for the first root and 10 cents for each additional root.** We will pack the plants securely with moist material so that they will arrive in a fresh condition ready to be put in your garden. Larger shipments may be sent express collect.

NEW INTRODUCTIONS

For many years we have been growing new peonies from seed pollenized by the best known varieties. We have observed these carefully for blooming qualities and have discarded those which did not measure up to our highest standard. The ones listed below are, we believe, of merit and will hold their place in any garden.

Arthur H. Fewkes — A variety originated by the late Arthur H. Fewkes and named by his family. Strong stems of medium height. Wide petals of fine form and texture, ivory white with salmon shadings at base of petals which give a buff or salmon light throughout the flower. Late \$12.00.

Amberglow — Strong upright stems of medium height bearing dark green leaves which have a peculiar fluted effect. The bud is delicate pink and the flower globular, flesh pink with salmon lights. Late but opens well and is noticeable for its delicate coloring and crisp freshness. \$4.00.

Annisquam — Large globular blooms of tender pink which retain their coloring until the petals fall. The petals are broad and rounded forming a cupped-shaped flower of smooth attractive appearance. Good both as a cut flower and for garden use. Pleasant fragrance. Mid-season. We consider this one of our finest introductions. \$15.00.

Magnolia (Japanese type) — Bright rose-pink with overlapping petals. Center of enlarged stamens of chrome-yellow which are crusted with golden yellow. Strong vigorous growth. Extra good for garden effects. \$2.50.

ANNISQUAM PEONY
One of Our New Introductions



Rapture — Very large, the outer petals broad and rounded, center petals shorter giving the blooms a cupped effect. Pure white suffused with a creamy light. Pleasant fragrance. Mid-season. \$12.00.

Summer Cloud — Faint pink buds open into well-formed flowers with wide outer petals of white and center of narrower petals having a creamy light. Long, strong stems. We consider this to be superior to Kelway's Glorious. Midseason. \$4.00.

White Gull (Japanese type) — A double row of broad rounded petals of white surround a cushion of yellow stamens. Red stigmas. Much admired by all who have seen it. \$3.00.

DOUBLE-FLOWERING PEONIES

For your convenience we have listed these according to color.

Prices quoted are for strong, healthy plants with at least three to five buds.

For two-year clumps, add 50%.

For three-year clumps, double the price.

When ordering five or more of a single named variety, deduct 10% of quoted prices; e. g. Five or more of a variety priced at \$1.50 each would be \$1.35 each.

(Double Peonies continued on next page)

For shipping charges see Page 42.

The number following each name is the percentage rating given by the American Peony Society.

We grow and test many varieties, listing those which seem most desirable. If you do not find the variety you wish, ask us as we have many not listed.

White and Blush

Amberglow — See Page 42.

Arthur H. Fewkes — See Page 42.

***Avalanche** 8.7 — Fine flowers of convex form, ivory-white sometimes with a touch of crimson on center petals. Extra good. Late midseason. \$1.00.

***Baroness Schroeder** 9.0 — Well-formed globular flowers of white with a soft baby-pink center changing to white. Very satisfactory. Late midseason. \$1.50.

Betty Blossom 8.7 — A Cherry Hill production. Outer petals white slightly tinted yellow, center ring of short petals heavily edged yellow. Total effect, soft yellow. Late midseason. \$1.50.

Cornelia Shaylor 9.1 — Large, full flowers or pyramidal form. Soft pink and white. \$1.50.

***Duchesse de Nemours** 8.1 — Broad, cup-shaped outer petals of white and center of sulphur-yellow. Blooms freely. Early midseason. \$1.00.

***Enchanteress** 8.9 — Large globular flowers of creamy-white sometimes flecked carmine. An exceptionally fine late variety. \$1.50.

***Festiva Maxima** 9.3 — Exceptionally large ivory-white flowers with a fleck of crimson in the center. Strong stems and foliage. Midseason. \$1.00.

***Frances Willard** 9.1 — Strong stems surmounted by large flowers of lovely cream white. Late midseason. \$1.50.

Frankie Curtis 8.9 — Large white blossoms borne on stiff stems. Midseason. \$2.00.

***Harry F. Little** — Gold Medal A.P.S. The delicate tinted buds open into large white flowers tinted with cream. Broad petals somewhat notched. \$5.00.

***James Kelway** 8.7 — Exquisite white with golden glow. Very fragrant. Early midseason. \$1.50.

Jubilee 8.9 — Immense flat flowers of ivory-white. Stems long but inclined to be weak. Midseason. \$1.50.

***Kelway's Glorious** 9.8 — Buds slightly tinted pink open into large flowers of glistening white. Fragrant. Late midseason. An exceptionally fine variety. \$3.00.

- ***Lady Aroostook** — Large well-formed flowers of white with a suggestion of cream and occasional flecks of crimson. The stiff reddish stems hold the flowers well above the foliage. Noticeable in the garden or border. Mid-season. \$2.50.
- Laura Dessert** 8.8 — Cream-white guard petals with canary yellow center. One of the best "yellow" peonies. Mid-season. \$1.50.
- ***Le Cygne** 9.9 — Charming, milk-white with broad, rounded petals. The large symmetrical blooms are never coarse. Midseason. An extra fine variety. \$3.00.
- Madame Emile Lemoine** 8.9 — Soft flesh-white. Midseason. \$1.50.
- ***Madame Jules Dessert** 9.4 — Large flowers with broad petals of creamy-white lighted with buff and salmon shades. Midseason. \$1.50.
- Mrs. A. M. Brand** 9.0 — Very large, rather flat flowers of pure white. Fragrant. Tall strong stems. Late. \$3.00.
- ***Mrs. A. O. Norton** — Very large flowers with broad, overlapping petals of pure white suffused yellow at the base. Late midseason. A fine new variety. \$15.00.
- Mrs. Edward Harding** 9.3 — Large, full flowers of pure white. Late midseason. \$1.50.
- ***Mrs. Frank Beach** 8.9 — Creamy white with narrow petals giving a lacy appearance. Late. \$3.00.
- Mrs. Harriet Gentry** 8.9 — Glistening white with a greenish tinge at base of petals. Late. \$2.00.
- Nimbus** 9.1 — White with blush center. Fragrant. Excellent habit and gives a charming effect. Late. \$1.50.
- Nymphaea** 8.8 — A Cherry Hill production. Flat flowers of creamy-white petals mixed with yellow stamens. The edges of the petals are somewhat rolled, giving a water-lily effect. Midseason. \$1.50.
- ***Primevere** 8.6 — Outer petals deep cream color with center of deep sulphur-yellow. This and Laura Dessert are the two best "yellow" peonies. Midseason. \$1.50.
- ***Priscilla Alden** 9.1 — Pure white with broad rounded petals. Noticeable in the garden for its fresh appearance. A fine variety. Early midseason. \$2.00.
- Rapture** — See Page 43.
- Summer Cloud** — See Page 43.
- Thomas C. Thurlow** 9.1 — A Cherry Hill production. Broad petals of salmon-flesh changing to white, lighted by narrow petals edged with yellow. Does best when well-established. Fragrant. Midseason. \$2.00.

Light Pink

- ***Albert Crousse** 8.6 — Large flowers of soft shell-pink with faint salmon tints. Late. \$1.50.
- Annisquam** — See Page 42.
- A. P. Saunders** 8.6 — A Cherry Hill production. Large flesh-pink flowers, lighter in center, outer petals sometimes marked carmine. Slightly fragrant. Late. \$1.50.
- ***Edwin C. Shaw** 9.1 — A Cherry Hill production. Very large flowers of flesh-pink with broad rounded petals. Symmetrical in form and cupped in shape, this is especially attractive. Fragrant. Late midseason. \$2.50.
- ***George W. Peyton** — Delicate flesh pink showing amber lights at base of petals. Late. A very fine new variety. \$5.00.
- Georgiana Shaylor** 8.9 — Large, rather flat, flowers of pale rose-pink occasionally flecked carmine. Late midseason. \$1.00.
- ***Grandiflora** 8.8.—Flat flowers of silvery shell-pink. Pointed petals. Very late. Extra good. \$1.50.
- Hansina Brand** 9.0 — Flat flowers of deep shell-pink with salmon lights. \$3.50.
- James Boyd** 8.9 —A Cherry Hill production. Flesh-pink tinted cream and buff in center with golden lights at base of petals. Fragrant. Late. \$1.50.
- ***Jeannot** 9.2 — Shell-pink with lavender and salmon lights. Late. \$1.50.
- ***Katharine Havemeyer** 9.0 — A Cherry Hill production. Large blooms of light rose-pink. The broad petals are cupped in the center giving a rosebud effect. Fragrant. Late midseason. \$2.50.
- La Perle** 8.5 — Blush-white center, growing darker toward the edge. Fragrant. Late. \$1.50.
- ***Madame Ducel** 7.9 — Large blooms of silvery pink resembling mammoth Chrysanthemums. Very fine. Midseason. \$1.00.
- ***Madame Emile Galle** 8.5 — A lovely shade of deep shell-pink. Flowers large and borne on long stems. Late. \$1.00.
- ***Milton Hill** 9.0 — Delicate flesh-color with salmon tints, sometimes marked crimson. An exquisite flower. Late. \$1.50.
- ***M. Jules Elie** 9.2 — Globular blooms, outer petals recurved, resembling huge chrysanthemums. Clear medium pink with a silvery tinge. Midseason. \$1.50.

- ***Myrtle Gentry** 9.0 — Large, full flowers of rosy-white or pale pink with salmon lights; broad, rounded petals. An outstanding variety. \$2.50.
- ***Nick Shaylor** 9.2 — Large globular blooms of creamy-white. Pink and salmon lights at base of petals suffuse the whole flowers giving a charming effect. Late. \$4.00.
- ***President Wilson** 9.3 — A Cherry Hill production. Large, bright rose-pink changing to shell-pink as flower opens. Petals broad and overlapping with cupped center. The blooms will last a long time and hold their delicate coloring to the end. Spicy fragrance. Late. \$2.50.
- ***Pride of Essex** 8.9 — A Cherry Hill production. Large, cup-shaped blooms of deep shell-pink borne on strong upright stems. Clear fragrance. Midseason. \$1.50.
- ***Reine Hortense** 8.7 — Large, compact flowers with broad rounded petals of soft flesh color with some crimson splashes. \$1.00.
- Rose Shaylor** 9.1 — Flesh-pink to creamy-white. Erect, strong growth. Midseason. \$2.00.
- ***Sarah Bernhardt** 9.0 — Large flowers of delicate shell-pink of charming freshness. Extra good. Late. \$1.50.
- ***Therese** 9.8 — Large soft shell-pink with lighter center. Vigorous and free-blooming, this is one of the most popular and satisfactory varieties which we have. Early mid-season. \$2.00.
- ***Venus (Kelway)** 8.3 — Exquisite pointed buds. Delicate shell-pink and white. Strong stems and free blooming quality. Very fine. Midseason. \$1.00.
- ***Walter Faxon** 9.3 — Bright shell-pink with salmon shades. Almost the only really pink peony. Medium-sized blooms. Midseason. \$1.50.

Deep Pink

- Auguste Dessert** 8.7 — Bright rose-pink with silvery edges. Especially fine for garden effects. Midseason. \$1.50.
- ***Edulis Superba** 7.6 — Deep rose-pink especially good in the garden. Early. \$1.00.
- H. A. Hagen** 8.2 — Cup-shaped blooms, deep rosy-pink. Late. \$1.50.
- Judge Berry** 8.6 — Large flat blooms of soft fresh pink. Early. \$1.50.
- ***Jules Calot** 7.2 — Globular blooms of deep rose-pink of a pleasing shade not often found. Blooms freely. Late. \$1.00.

- ***Lillian Gumm** 8.9 — Immense, very full double blooms of rose-pink. Late. \$1.50.
- ***Merrimac** — A Cherry Hill production. Very large globular blooms of deep rose-pink of an unusual shade. Strong stems and foliage. Pleasant fragrance. Late, but always opens well. \$3.50.
- ***Modeste Guerin** 7.8 — Unusual shade of dark rose-pink. Fragrant. Effective as a garden variety. Early. \$1.00.
- ***Phyllis Kelway** 9.0 — Bright pink, yet with delicate coloring which gives a fresh and charming effect. Strong erect stems. Fragrant. Late. \$1.50.
- ***Rachel** 8.3 — Fresh, soft rose. Strong stems. Late mid-season. \$1.00.
- ***Suzette** 8.2 — Brilliant rose-pink. The strong stems give a profusion of bloom. Midseason. \$1.00.

Red

- ***Adolphe Rousseau** 8.5 — Large, sometimes semi-double flowers of deep garnet. Very popular variety as its height and color make it conspicuous in the garden. Early mid-season. \$1.00.
- ***Charles McKellip** 7.8 — Globular blooms of brilliant red. Blooms freely. Late midseason. \$1.00.
- ***Cherry Hill** 8.6 — A Cherry Hill production. Deep garnet with a sheen which makes a bright appearance in the garden. Center petals are intermixed with golden stamens. The first of our double varieties to bloom and the tall strong stems carry the flowers well. A distinct garden variety. \$1.50.
- Eugene Bigot** 8.3 — A very fine brilliant crimson which does not fade. Late midseason. \$1.00.
- ***Felix Crousse** 8.4 — Brilliant crimson with a deeper ruby-red center. Blooms freely and vigorously. A very satisfactory variety. Midseason to late. \$1.00.
- Grover Cleveland** 8.2 — Fine dark crimson. Late. \$1.50.
- ***Karl Rosenfield** 8.8—Brilliant dark crimson. Blooms freely and one of the best of this color. Midseason. \$1.50.
- ***Longfellow** 9.0 — Brilliant crimson of large size. Mid-season. \$2.00.
- Lora Dexheimer** 8.4 — Dark red making a fine accent in the garden. Midseason. \$1.50.
- ***Mary Brand** 8.7 — Brilliant deep red which does not fade. Midseason. \$1.50.

(Double Peonies continued)

- ***Matilda Lewis** 9.0 — Very dark maroon-red flowers of globular form. Strong erect growth with dark green foliage. We consider this to be the best very dark red which we have seen. \$3.00.
- ***M. Martin Cahuzac** 8.8 — Deep garnet coloring makes this one of the very darkest of peonies. Globular flowers of medium size. Midseason. \$2.00.
- ***Philippe Rivoire** 9.2 — Fine dark crimson. Flowers of medium size hold their color until the petals fall. Fragrant. Midseason to late. \$2.50.
- ***Richard Carvel** 8.8 — A fine early red, producing many blooms. Resembles Felix Crousse, but earlier. Early. \$1.50.

*Varieties in this class we have found to be the best and most reliable for color and free-blooming quality. We recommend these if you are in doubt as to selection.

Single Peonies

For shipping charges see Page 42.

Prices quoted are for strong, healthy plants with at least three to five buds.

Two-year clumps, add 50%.

Three-year clumps at double price.

When ordering five or more of a single named variety, deduct 10% of quoted prices; e. g. five or more of a variety priced at \$1.50 each would be \$1.35 each.

The number following each name is the percentage rating given by the American Peony Society.

The single flowered varieties are the first to bloom, but the side buds will continue to bloom over a considerable season. They are specially satisfactory for garden effects as they withstand the rains and wind where the heavier doubles might be beaten down. The large yellow centers of stamens give a distinct note.

- ***Clairette** 8.1 — Long arching stems bearing large pure white flowers. The petals are long and silky. \$1.50.
- ***Helen** 8.9 — A Cherry Hill production. Stems very tall and erect with broad foliage. A double row of broad, cupped petals of deep shell-pink surround a mass of golden stamens. The earliest to bloom. \$1.50.

(Single Peonies continued on next page)

(Single Peonies continued)

- ***Le Jour** — Large pure white, petals of good substance and a fine variety. \$2.00.
- ***L'Etincelante** 8.4 — Broad petals of bright pink with silvery borders. Especially attractive in the garden. \$1.50.
- ***Mellen Knight** 8.4 — Strong erect stems bearing rich crimson flowers with golden centers. The petals are smooth and rounded. \$1.50.
- Mischief** 8.6 — Clear, even pink flowers, borne in abundance on strong stems. Later than most singles and is attractive for a long time. \$1.50.
- ***Pride of Langport** 8.9 — Deep shell-pink with compact center of golden stamens. Stems strong and an abundance of bloom. \$1.50.
- ***The Bride** 8.4 — Large, white flowers borne on strong stems. A fine variety. \$1.50.
- Victoria** — Brilliant crimson flowers which glow in the sun. Foliage dark green. \$1.00.

Japanese Type Peonies

For shipping charges see Page 42.

Prices quoted are for strong, healthy plants with at least three to five buds.

Two-year clumps, add 50%.

Three-year clumps at double price.

When ordering five or more of a single named variety, deduct 10% of quoted prices; e. g. five or more of a variety priced at \$1.50 each would be \$1.35 each.

The number following each name is the percentage rating given by the American Peony Society.

These so-called Japanese Peonies which have been grown in this country are those which have one or two rows of petals and centers of stamens much thickened. These latter are almost devoid of pollen and in some varieties make thick cushions of golden yellow. In others the stamens are self-color tipped or crusted with yellow. The effects are beautiful and distinct and are charming for the garden and as cut flower decorations.

- ***Ama-no-sode** 9.2 — Large, bright rose-pink with lighter tints. Extra. \$3.00.
- Aureolin** 8.9 — Pink, deep sulphur center. \$1.50.

- Charm 9.2** — Deep red with well-formed center of yellow. The petals are smooth and rounded making a very attractive flower. Late. \$2.50.
- Currant Red** — Lively cerise-red petals, stamens yellow, marked with self color. Attractive in the garden. \$2.50.
- *Departing Sun 8.5** — Broad petals of carmine-red. Stamens petal color, crested yellow. When seen in the light of the setting sun, it fairly glows. \$2.50.
- Emma** — Broad petals of bright pink. Very fine variety. \$3.00.
- *Francois** — Bright red with salmon tints with heavy golden center. Late midseason. \$1.50.
- *Glow** — Deep cerise-pink surround a cushion of narrow petals overlaid and crusted with straw yellow. A bright tone in the garden. \$1.50.
- Hakodate 9.0** — Cup-shaped petals of white with central cushion of yellow. Late. \$3.00.
- *Hari-ai-nin 8.9** — Dark maroon-red petals with center composed of broad stamens the same color of petals but heavily tipped yellow. Total effect of stamens is lines of red and yellow. \$2.50.
- *Isani Gidui 9.3** — Rounded petals of pure white surround a compact cushion of golden stamens. Lovely white and gold effect. \$3.00.
- Jeffries' Crimson** — Broad, rounded petals of deep crimson with a satiny finish. Compact mass of yellow stamens makes a flower which strikes a distinct note in the garden. \$1.50.
- *King of England 8.6** — A rich shade of carmine, stamens self-color edged golden. \$1.50.
- *Magnolia** See Page 42.
- *Mikado 8.6** — Rich red petals and broad center of stamens of deep yellow edged in red. \$1.50.
- Purity** — White petals enclose a cushion of yellow stamens. \$1.50.
- Purple Cup** — Cherry-red petals and yellow center. \$1.50.
- Soshi** — Deep crimson and gold. Very effective in the garden. \$1.50.
- Tokio 8.9** — Tall, strong stems, flowers of rose-pink with large yellow center. Blooms freely. \$1.50.
- *White Gull** See Page 43.

*Varieties in this class we have found to be the best and most reliable for color and free-blooming quality.

PEONY COLLECTIONS OF UNUSUAL VALUE

COLLECTION NO. 1

Albert Crousse 8.6 — Light pink. Late.

Karl Rosenfield 8.8 — Brilliant dark crimson. Midseason.

M. Jules Elie 9.2 — Clear pink with silvery light. Early mid-season.

Priscilla Alden 9.1 — Large, pure white. Early.

Regular Price \$6.50 — Collection Price \$5.00

COLLECTION NO. 2 — JAPANESE TYPE

Departing Sun 8.5 — Light crimson, stamens self-color tipped yellow. Midseason.

Hari-ai-nin 8.9. — Dark maroon-red, stamens tipped yellow. Late midseason.

Jeffries' Crimson — Deep satiny crimson with golden center. Midseason.

White Gull — Pure white, golden center. Midseason.

Regular Price \$9.50 — Collection Price \$8.00

VARIOUS PEONIES

Avant Garde 8.6 — Exquisite, single flowers of pale smoky-pink with golden tints and golden stamens. Very early. \$2.50.

Le Printemps 8.6 — Single, creamy-yellow with faint reddish veinings and buff shades. \$2.50.

VARIETIES NOT LISTED

We have many other kinds not listed. Should you wish any special variety, we will quote you if available.

ASSORTED COLLECTIONS

For those who wish a collection without names, we can furnish a very good assortment in our selection of colors in two grades — \$4.00 and \$6.00 per dozen. If marked to color such as red, pink or white, in any assortment you select, at \$7.50 per dozen. They are all good varieties and would be worth much more if sold to name.

In Japanese-type Peonies we can furnish two grades in a mixture of colors. \$5.00 and \$7.50 per dozen.

For shipping charges see Page 42.

Phlox

For masses of color in the garden or border in summer and early fall, there is nothing more satisfactory than Phlox. The newer varieties have been selected for their clear coloring — bright scarlet reds, clear pinks, soft lavenders and purples avoiding magenta. These with white give pleasing color combinations.

Phlox should be planted in well-drained, fertile soil and thinned every three or four years. This allows more air drainage and overcomes the tendency for the lower leaves to mildew. Dusting the foliage with sulphur is also one of the best methods of prevention. Pick off the faded blooms before the seed ripens. This allows the plant to make a second flowering and prevents seedlings springing up and choking the parent plants. Seedlings are usually inferior in color and cause much confusion.

50 cents each; \$4.00 per ten.

Five plants of one variety will be furnished at the ten rate

Daily Sketch — Medium height, late midseason. Extra large flowers of brilliant salmon-pink with darker eye.

Leo Schlageter—Tall, early midseason. Brilliant scarlet with salmon lights. Growth strong and vigorous.

Mary Louise (Saunders) — Tall, late. We introduced this variety some years ago and it is now considered to be the best white phlox. Well-formed heads bearing large, waxy white flowers of great beauty.

Miss Lingard (*P. suffruticosa*) — Dark glossy green foliage and medium-height stems. White with a faint pink eye. Flowers early and intermittently throughout the summer.

Spitfire (Frau von Mauthner) — Medium height, late. Large heads of brilliant salmon orange with small crimson eye.

AN ATTRACTIVE GARDEN FOR A CITY LOT



Iris

The bearded Iris have a wide range of color, their various tints and hues embracing all colors of the rainbow. They are hardy and easy to grow, continuing for years with almost no attention. Liberal use will produce masses of bloom making a most colorful garden through May and June.

We are constantly adding new varieties which we consider have intrinsic worth and discarding those which are superseded.

The old leaves and stalks should be cleaned off and burned to leave no harboring place for disease or pests.

Five of one variety will be furnished at the ten rate

Ambassadeur — Tall, reddish-violet with velvety violet falls. 30 cents each, \$2.50 per ten.

Bruno — Medium, rosy-fawn with rich reddish-brown falls. 30 cents each, \$2.50 per ten.

Coronation—Tall, the clear yellow flowers make a fine mass effect. One of the most satisfactory of this color. 30 cents each. \$2.50 per ten.

Crystal Beauty — Tall, branching flower stalks bear large flowers of crystal white. 40 cents each, \$3.50 per ten.

Depute Nomblot — Tall, copper-red with deep claret-crimson falls, 30 cents each, \$2.50 per ten.

Dream — Medium, soft even pink. 30 cents each, \$2.50 per ten.

Grace Sturtevant — Tall, chocolate-brown with darker falls and bright orange-red beard. 30 cents each, \$2.50 per ten.

Great Lakes—Tall, strong stems bear large azure blue flowers of fine form. A variety of great merit. 50 cents each, \$4.50 per ten.

Indian Chief — Tall, deep reddish shades overlaid with bronze, making a very attractive flower. 35 cents each, \$3.00 per ten.

Jean Cayeaux — Tall, light buff with a golden light. Large, well-shaped flowers. A variety of charming, yet elusive beauty. 30 cents each, \$2.50 per ten.

June Bride — Medium, pure white with golden beard. Fine for mass effect as it blooms freely. 30 cents each, \$2.50 per ten.

Kochi — Medium, pointed blackish purple buds and deep purple flowers. Early. 30 cents each, \$2.50 per ten.

- Legend** — Tall, deep, rich claret color with lighter bluish upper petals. 40 cents each, \$3.50 per ten.
- Lent A. Williamson** — Tall, flowers of deep blue with darker rich purple falls. A fine variety. 30 cents each, \$2.50 per ten.
- Lord of June** — Tall, immense flowers on branching stems. Blue-lavender with deep violet falls. 35 cents each, \$3.00 per ten.
- Los Angeles** — Tall, large flowers of white with faint edgings of lavender blue. 40 cents each, \$3.50 per ten.
- Moon Magic** — Medium, delightful pale yellow with an indescribable smooth finish. 50 cents each, \$4.50 per ten.
- Morning Splendor** — Medium, deep red-violet with darker falls. 35 cents each, \$3.00 per ten.
- Pallida Dalmatica** — Tall, produces masses of clear lavender blue. Not a new variety, but fine for mass effect. 30 cents each, \$2.50 per ten.
- Pluie d'Or** — Tall, one of the best all-around yellows. Masses of golden-yellow flowers of large size. 35 cents each, \$3.00 per ten.
- Rameses** — Tall, rose-pink and buff exceptionally well-blended. Heavy apricot beard. 30 cents each, \$2.50 per ten.
- Red Wing** — Medium, dull red with deeper brownish shades. Large flowers. 30 cents each, \$2.50 per ten.
- San Francisco** — Tall, white with edges of the petals stitched blue. 40 cents each, \$3.50 per ten.
- Sierra Blue** — Tall, soft, clear blue of fine form. 50 cents each, \$4.50 per ten.
- Souvenir de Mme. Gaudichau** — Medium, rich, blackish-purple of unusual quality. 35 cents each, \$3.00 per ten.
- Susan Bliss** — Medium, rich rose-pink, with a delightful sheen. 30 cents each, \$2.50 per ten.
- Tiffany** — Medium to tall. A new soft yellow with markings of bronze on edge of petals. 50 cents each, \$4.50 per ten.
- Valor** — Tall, broad petals of deep blackish-purple, outstanding in the garden. Fragrant. 40 cents each, \$3.50 per ten.
- Venus de Milo** — Medium, rich white flowers with a golden beard, of very pleasing effect. One of the best white varieties yet produced. 40 cents each, \$3.50 per ten.



Perennials

Herbaceous perennials form the "backbone" of the garden or border, as they continue to increase in size and beauty from year to year. With annuals, they provide a colorful effect through the summer.

We have reduced our list to the stronger-growing plants which may be used with a shrubbery border to give accents at focal points.

Strong Field Grown Plants in pots for your convenience in transplanting 50 cents each except as noted. These cannot be shipped by parcel post.

Aquilegia (Columbine) Mrs. Scott Elliot Hybrids — Blooms of large size and very long spurs in lavender, blue, pink, cream and yellow.

Chrysanthemum—Hardy Garden Varieties

The following varieties are low growing giving mounds of color in late Summer and Fall. Pinch back the tips of the new growth until July and you will get more flowers later.

Major Cushion — bright rose-pink flowers in great profusion.

Red Cushion — deep red with golden centers. Early.

White Cushion — faint pink buds opening into clear white flowers.

Yellow Cushion — produces quantities of bright yellow flowers. Vigorous and hardy growth.

Glowing Coals — This is a taller-growing variety (2 to 2½ ft.) with glowing dark red blooms. Fine for cutting.

Chrysanthemum, Shasta Daisy, Mount Shasta — Double pure white flowers measuring 3 to 4 inches across, are borne from June until frost. Very attractive both in the garden and as a cut flower. Ht. 2 ft. 65 cents each.

Delphinium Giant Pacific Hybrids — Large flowers, well placed on very long stems, are mostly double in lovely shades and combinations of lavender and blue. Ht. 5 to 6 ft. 60 cents each.

Dicentra spectabilis (Bleedingheart) — An old-time favorite with heart-shaped pink and white blossoms borne in long sprays. May-June. Ht. 2 ft. 75 cents each.

- Dictamnus fraxinella** (Gas Plant) — Deep rose-pink flowers in June on bushy plants 2 to 3 ft. tall. May be planted in front of shrubs where it will continue for years. 60 cents each.
- Dictamnus f. alba** — A form of the above producing flowers of white with pink markings in throat. 60 cents each.
- Digitalis ambigua** (Foxglove) — A hardy perennial enduring for years. Pale yellow flowers on stems 1½ to 2 ft. high appear from June until August.
- Euphorbia polychroma** (Cushion Spurge) — Bushy plants with yellow flower bracts. Fine for the border and in shady places. Ht. 12 to 15 in. May-July.
- Gypsophila, Bristol Fairy** (Double Baby's Breath) — Bears a multitude of tiny double white flowers nearly all summer. Ht. 2 ft. 65 cents each.
- Hemerocallis Hyperion** — Very large broad petals of clear canary-yellow. The flowers are 5 to 6 in. across. Considered the finest of all. Ht. 3½ ft.
- Hemerocallis Mrs. W. H. Wyman** — The glistening, lemon-yellow flowers are very attractive in the late summer. Ht. 3½ ft.
- Hemerocallis Ophir** — Large flowers of deep golden yellow are borne in profusion. Ht. 3½ ft.
- Hollyhocks** — The popular biennial with large single flowers of red, pink, yellow, etc. We can furnish only assorted colors. Ht. 6 ft.
- Lilium elegans, Shedd Variety** — Upright cup-shaped flowers of brilliant dark crimson. Introduced by us, it is still rare. 60 cents each.
- Lilium regale** (Regal Lily) — Ivory-white, trumpet-shaped flowers with pink shading. Center canary-yellow. Very fragrant. One of the most satisfactory of the lilies.
- Lupinus polyphillus** Russell Hybrids (Lupin) — Long spikes of flowers in a wide range of colors. June-September. Ht. 3 ft.
- Platycodon g. mariesi** (Balloon Flower) — Buds which resemble small balloons open into soft blue cup-shaped flowers all summer. Dwarf habit of growth. Ht. 18 in.
- Trollius europaeus** (Double Buttercup) — Showy orange-yellow flowers borne on upright stems 1½ to 2 ft. tall like giant buttercups. May-June. 60 cents each.



Fertilizers, Insecticides and Fungicides

PEAT MOSS — Fine ground for garden use. Good for mulching or adding humus to soil.

Large bale \$4.50

NATIVE PEAT — Fine ground. Very good when added to soil for Rhododendrons, Azaleas, Laurel, etc.

22 to 25 lb. bag65

PULVERIZED COW MANURE — One of the best organic soil conditioners. Especially good for roses.

Large bag approximately 50 lb 1.50

BUELL POULTRY PEAT — Poultry manure combined with peat. Wholly organic plant food with humus added which holds moisture in the soil. Can be used with no fear of burning on perennials, shrubs and lawns.

5 lbs.60

25 lbs. 1.35

50 lbs. 2.25

100 lbs. 4.00

VERTAGREEN 5-10-5 — A complete plant food for gardens, shrubs and lawns.

5 lb. pkg.55

10 lb. pkg.95

25 lb. bag 1.80

50 lb. bag 2.75

100 lb. bag 4.75

The above five items are for truck delivery only.

No mail or express.

* * * * *

WETTABLE & DUSTING SULPHUR — A summer fungicide containing 95% sulphur. Controls black spot and mildew on roses, also spider mite on evergreens.

2 lb. canister65

D.D.T. DUST 5% — Controls Japanese Beetle, all caterpillars, leaf hoppers and thrip.

1 lb. canister50

D.D.T. DUST 50% — Wettable powder. For use to control Japanese Beetles, worms and caterpillars, soft scales, rose chafers and almost all chewing insects. If sprayed on shrubs and evergreens around the house and yard, it kills mosquitoes that hide there through the day.

1 lb. can.60

CHLORDANE 5% DUST OR SPRAY — Controls cutworms, wire worms and most beetles. Also leaf miner on Birch and Elm trees.

1 lb. can60

LINDANE 25% — Especially good for Birch leaf miner. Also used for treating vegetable seeds against wire worms and root maggots.

8 oz canister 1.45

SPIDER MITE DUST OR SPRAY — Contains Aramite for control of red spider on roses. Also spider mites on Arbovitae, Spruce and other evergreens.

1 lb. sifter canister85

TRIOGEN ROSE SPRAY — One of the best combination insecticides and fungicides for roses. Contains Fermate as well as other fungicides for black spot. Destroys spider mites, thrips, midge and scales.

A kit (10-20 plants) 2.35

B kit (50-80 plants) 6.00

SEYMOUR SMITH "SNAP CUT" #119 — One of the best moderate priced hand pruners for all around garden use. \$2.75.

AN ATTRACTIVE SETTING FOR YOUR HOME



INDEX OF COMMON AND BOTANICAL NAMES OF TREES AND SHRUBS

EVERGREEN TREES

Common Names	Botanical Names	Page
ARBORVITAE See	THUYA	7-8
CYPRESS	" CHAMAECYPARIS	3
HEMLOCK	" TSUGA	8
JUNIPER	" JUNIPERUS	3-4
PINE	" PINUS	4-5
SPRUCE	" PICEA	4
YEW	" TAXUS	5-7

EVERGREEN SHRUBS

ANDROMEDA See	PIERIS	11
BITTERSWEET	" EUONYMUS	9-10
BOXLEAF HOLLY	" ILEX	10
DAPHNE	" DAPHNE	9
ENGLISH IVY	" HEDERA	10
LEUCOTHOE	" LEUCOTHOE	10
LILY-OF-THE-VALLEY BUSH	" PIERIS	11
MOUNTAIN LAUREL	" KALMIA	10
PERIWINKLE	" VINCA	13
RHODODENDRON	" RHODODENDRON	11-13
SPURGE	" PACHYSANDRA	10

DECIDUOUS TREES

BIRCH See	BETULA	14
CRAB	" MALUS	16-18
DOGWOOD	" CORNUS	15
ELM	" ULMUS	18
GOLDEN CHAIN	" LABURNUM	16
HAWTHORN	" CRATAEGUS	15-16
HONEYLOCUST	" GLEDITSIA	16
MAGNOLIA	" MAGNOLIA	16
MAPLE	" ACER	14
MORAINÉ LOCUST	" GLEDITSIA T.I. MORAINÉ	16
MOUNTAIN ASH	" SORBUS	18
POPLAR	" POPULUS	18
REDBUD	" CERCIS	14
SILVERBELL	" HALESIA	15
TREE LILAC	" SYRINGA	18
WILLOW	" SALIX	18
YELLOWWOOD	" CLADRASTIS	15

DECIDUOUS SHRUBS

Common Names		Botanical Names	Page
ALMOND	See	PRUNUS	25
ALTHEA	"	HIBISCUS	23
ARROW-WOOD	"	VIBURNUM	29
AZALEA	"	AZALEA	19-20
BARBERRY	"	BERBERIS	20-21
BAYBERRY	"	MYRICA	24
BEAUTY BUSH	"	KOLKWITZIA	24
BEACH PLUM	"	PRUNUS	25
BLUEBERRY	"	VACCINUM	28
BUCKTHORN	"	RHAMNUS	26
BURNING BUSH	"	EUONYMUS	23
BUTTERFLY BUSH	"	BUDDLEIA	21
COTONEASTER	"	COTONEASTER	22
CRANBERRYBUSH	"	VIBURNUM	28
DEUTZIA	"	DEUTZIA	22
DOGWOOD	"	CORNUS	22
EUONYMUS	"	EUONYMUS	23
FLOWERING QUINCE	"	CYDONIA	22
GOLDEN BELL	"	FORSYTHIA	23
HONEYSUCKLE	"	LONICERA	24
HYDRANGEA	"	HYDRANGEA	24
KERRIA	"	KERRIA	24
LILAC	"	SYRINGA	26-28
MANCHU CHERRY	"	PRUNUS	25
MOCKORANGE	"	PHILADELPHUS	25
OLIVE	"	ELEAGNUS	23
PRIVET	"	LIGUSTRUM	24
PUSSY WILLOW	"	SALIX	26
SMOKE TREE	"	RHUS	26
SNOWBALL	"	VIRBURNUM	29
SNOWBERRY	"	SYMPHORICARPOS	26
SPIREA	"	SPIRAEA	26
SUMMER SWEET	"	CLETHRA	22
SWEET SHRUB	"	CALYCANTHUS	22
SYRINGA	"	PHILADELPHUS	25
VIBURNUM	"	VIBURNUM	29
WEIGELA	"	WEIGELA	29
WINTERBERRY	"	ILEX	24

VINES

BITTERSWEET	See	CELASTRUS	30
CLEMATIS	"	CLEMATIS	30
DUTCHMAN'S PIPE	"	ARISTOLOCHIA	30
FLEECEVINE	"	POLYGONUM	30
HONEYSUCKLE	"	LONICERA	30
IVY	"	AMPELOPSIS	30
WISTARIA	"	WISTARIA	31
WOODBINE	"	AMPELOPSIS	30

FRUIT STOCK

APPLES	32	GRAPEVINES	34
ASPARAGUS	35	PEACHES	33
BLUEBERRIES	34	PEARS	33
CHERRIES	33	PLUMS	34
DWARF APPLES	32	RASPBERRIES	34
DWARF PEARS	33		

	Page
FERTILIZERS, INSECTICIDES, etc.	58-59
IRIS	54-55
PERENNIALS	56-57
PHLOX	53
ROSES	36-40

INDEX TO PEONIES

Name	Page	Name	Page
A			
ADOLPHE ROUSSEAU	48	EMMA	51
ALBERT CROUSSE	46	ENCHANTERESSE	44
AMA-NO-SODE	50	EUGENE BIGOT	48
AMBERGLOW	42	F	
ANNISQUAM	42	FELIX CROUSSE	48
A. P. SAUNDERS	46	FESTIVA MAXIMA	44
ARTHUR H. FEWKES	42	FRANCES WILLARD	44
AUGUSTE DESSERT	47	FRANCOIS	51
AUREOLIN	50	FRANKIE CURTIS	44
AVALANCHE	44	G	
AVANTE GARDE	52	GEORGE W. PEYTON	46
B			
BARONESS SCHROEDER ..	44	GEORGIANA SHAYLOR ..	46
BETTY BLOSSOM	44	GLOW	51
C			
CHARLES McKELLUP	48	GRANDIFLORA	46
CHARM	51	GROVER CLEVELAND	48
CHERRY HILL	48	H	
CLAIRETTE	49	H. A. HAGEN	47
CORNELIA SHAYLOR	44	HAKODATE	51
CURRANT RED	51	HANSINA BRAND	46
D			
DEPARTING SUN	51	HARI-AI-NIN	51
DUCHESS de NEMOURS ..	44	HARRY F. LITTLE	44
E			
EDULIS SUPERBA	44	HELEN	49
EDWIN C. SHAW	46	I	
J			
		ISANI GIDUI	51
		J	
		JAMES BOYD	46
		JAMES KELWAY	44

INDEX TO PEONIES — (Continued)

Name	Page	Name	Page
JEANNOT	46	N	
JEFFRIES' CRIMONSON	51	NICK SHAYLOR	47
JUBILEE	44	NIMBUS	45
JUDGE BERRY	47	NYMPHAEA	45
JULES CALOT	47		
		P	
K		PHILLIPPE RIVOIRE	49
KARL ROSENFELD	48	PHYLLIS KELWAY	48
KATHARINE HAVEMEYER	46	PRESIDENT WILSON	47
KELWAY'S GLORIOUS	44	PRIDE OF ESSEX	47
KING OF ENGLAND	51	PRIDE OF LANGPORT	50
		PRIMEVERE	45
L		PRISCILLA ALDEN	45
LADY AROOSTOOK	45	PURITY	51
LA PERLE	46	PURPLE CUP	51
L'ETINCELANTE	50		
LAURA DESSERT	45	R	
LE CYGNE	45	RACHEL	48
LE JOUR	50	RAPTURE	43
LE PRINTEMPS	52	REINE HORTENSE	47
LILLIAN GUMM	48	RICHARD CAVEL	49
LONGFELLOW	48	ROSE SHAYLOR	47
LORA DEXHEIMER	48		
		S	
M		SARAH BERNHARDT	47
M. JULES ELIE	46	SOSHI	51
M. MARTIN CAHUZAC	49	SUMMER CLOUD	43
MADAME DUCEL	46	SUZETTE	48
MADAME EMILE GALLE	46		
MADAME EMILE LEMOINE	45	T	
MADAME JULES DESSERT	45	THE BRIDE	50
MAGNOLIA	42	THERESE	47
MARY BRAND	48	THOMAS C. THURLOW ..	45
MATILDA LEWIS	49	TOKIO	51
MELLEN KNIGHT	50	TORO-NO-MAKI	52
MERRIMAC	48		
MIKADO	51	V	
MITON HILL	46	VENUS (KELWAY)	47
MISCHIEF	50	VICTORIA	50
MODESTE GUERIN	48		
MRS. A. M. BRAND	45	W	
MRS. A. O. NORTON	45	WALTER FAXON	47
MRS. EDWARD HARDING	45	WHITE GULL	43
MRS. FRANK BEACH	45		
MRS. HARRIET GENTRY ..	45		
MYRTLE GENTRY	47		

Landscape Department

Often you are in doubt as to the plants to use for the beautification of your home grounds.

For those who would help in the matter, we have a competent staff who have had many years experience with the planning for the arrangement of the different trees and shrubs in their most suitable places.

We are always glad to help you in any way possible no matter how small the problem.

Telephone or write for an appointment (a few days in advance if possible) and we will gladly give you any estimates or suggestions that you may wish.

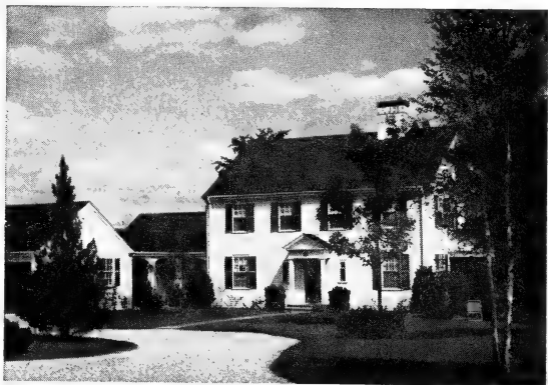
PLANTING

On large orders of trees in the larger sizes where the home owner cannot plant alone or obtain help in planting, we can, when previously arranged for, plant the stock we furnish. The plantsmen we can supply have had many years of experience at this work.

MAINTENANCE AND CARE

Evergreens and shrubs, when planted near the house, will in a few years, grow too large for the space assigned them and will mar the effect which was originally intended. Instead of waiting until they are too large and then pruning them drastically, it is much better to give them a light pruning every year. By this method no large branches are cut

EFFECTIVE PLANTING MAKES AN ATTRACTIVE HOME



and the planting will continue for many years improving in value and appearance. We have men available in the summer and winter months and the cost is slight when compared with the results obtained.

Especially near the house, the soil is often dry and lacking in plant food, and it is better to make a light application of fertilizer every year rather than too much at one time.

LARGE TREES

Large specimen trees may be moved with safety at almost any time of the year. The modern method of digging with a large ball of earth on the roots ensures the continuous flow of sap through the fine feeding roots. Trees handled in this manner usually continue to grow without any check and make immediate landscape effects. They may be placed with our special tree moving equipment even when the ground is frozen in the winter. If arranged for earlier this is an economical time.

The use of a few large specimens with the smaller plants gives very pleasing and satisfactory effects. We have growing a large variety of specimens which we can furnish, and are prepared to give you estimates on your needs without obligation on your part. You are cordially invited to visit the nurseries and see the quality of the trees and plants at Cherry Hill.

GIFT CERTIFICATES

We are prepared to issue Gift Certificates, redeemable by us. This certificate will bear the recipient's name and yours as donor. For anyone interested in a garden or planting the home grounds this makes a very acceptable Christmas or Anniversary gift.



For those interested in plants and flowers, we would recommend the Massachusetts Horticultural Society. Membership makes available all important books on gardening, lectures, the publication of Horticulture, etc. The annual membership is \$5.00. Apply to the Secretary, Massachusetts Horticultural Society, Horticultural Hall, Boston 15, Mass.

Condition of Sale

All stock is freshly dug on orders and this insures all stock being in the best possible shape when delivered to you.

We guarantee all our stock to be true to name and will replace any that proves other than represented or refund the purchase price. Beyond that, we can give no further warranty, as we cannot control planting conditions, weather and after-care.

One to four plants of a single size and variety at the each rate; five to twenty-four at the ten rate; twenty-five or more at the hundred rate when such rate is given. These prices apply to our usual first grade stock, but when a tree or plant of outstanding quality is selected, a special price is charged.

Terms: charge accounts for thirty days' credit may be opened by new customers giving satisfactory bank or trade references, but to those unknown to us, we ask for cash with order.

All prices for stock are here at the Nursery, and packing on large plants will be charged at cost. We are equipped to make truck delivery on full loads throughout New England and the surrounding territory at a cost which in most cases is not greater than the combined cost of packing, freight or express. This is a very satisfactory method as plants are delivered fresh, directly to the planting site. On small orders, less than a full truck load, we can usually make combination load deliveries within a radius of 40 miles of the nursery, the cost being divided depending on the size of the order. These, of course, cannot be delivered on any specified date. All plants, however, not balled will be packaged or wrapped so that if the customer is not there on arrival, they will keep safely for several days.

Due to modern methods of handling, the transplanting season has been greatly extended. Our spring season usually commences the last of March or early April and continues through June during which time almost all plants may be safely moved. Our fall season starts with the planting of evergreens and perennials in late July and deciduous material from October until the ground freezes.

Owing to the uncertainty of supplies, we reserve the right to change prices without notice.

Cherry Hill Nurseries

(THURLOWS AND STRANGER, INC.)
WEST NEWBURY and NEWBURYPORT, MASS.

Telephone Newburyport—Homestead 2-6688

Cherry Hill Nurseries

(THURLOWS AND STRANGER, INC.)
WEST NEWBURY and NEWBURYPORT, MASS.

Telephone Newburyport—Homestead 2-6688

Conveniently located, Cherry Hill Nurseries are only 36 miles north of Boston. Whether you come from the north, south, east or west you travel over excellent roads. Signs mark the way to the nurseries in our area.

FROM THE SOUTH. Take US Route 1 north bearing left on new Newburyport Expressway in Danvers. Turn off Expressway at Scotland Road, go west under the Expressway toward West Newbury and follow signs to the nurseries. It is also possible to turn off the Expressway farther north at Route 113, travel west on 113 following signs to the nurseries.

FROM THE NORTH. Take US Route 1 south to Newburyport, turn right on Route 113 and follow signs to the nurseries.

FROM THE EAST. Come to Old Newburyport Turnpike, turn off at Newburyport and travel West on Route 113 following signs to the nurseries.

FROM THE WEST. At Haverhill travel east to West Newbury on Route 113 and follow signs to nurseries.

Cherry Hill Nurseries

THURLOWS & STRANGER, INC.

Ornamental Evergreens, Shade Trees, Peonies,
Iris, Phlox, Hardy Garden Perennials

West Newbury Massachusetts

Return Postage Guaranteed

Library
U. S. Dept. of Agriculture
Washington 25, D. C.

Sec. 34,66, P. L. & R.
U. S. POSTAGE
PAID
West Newbury, Mass.
Permit No. 1